

Providence's 53/6-A  
Druid and Drombeg well  
South Porcupine, offshore Ireland –  
read across for Europa

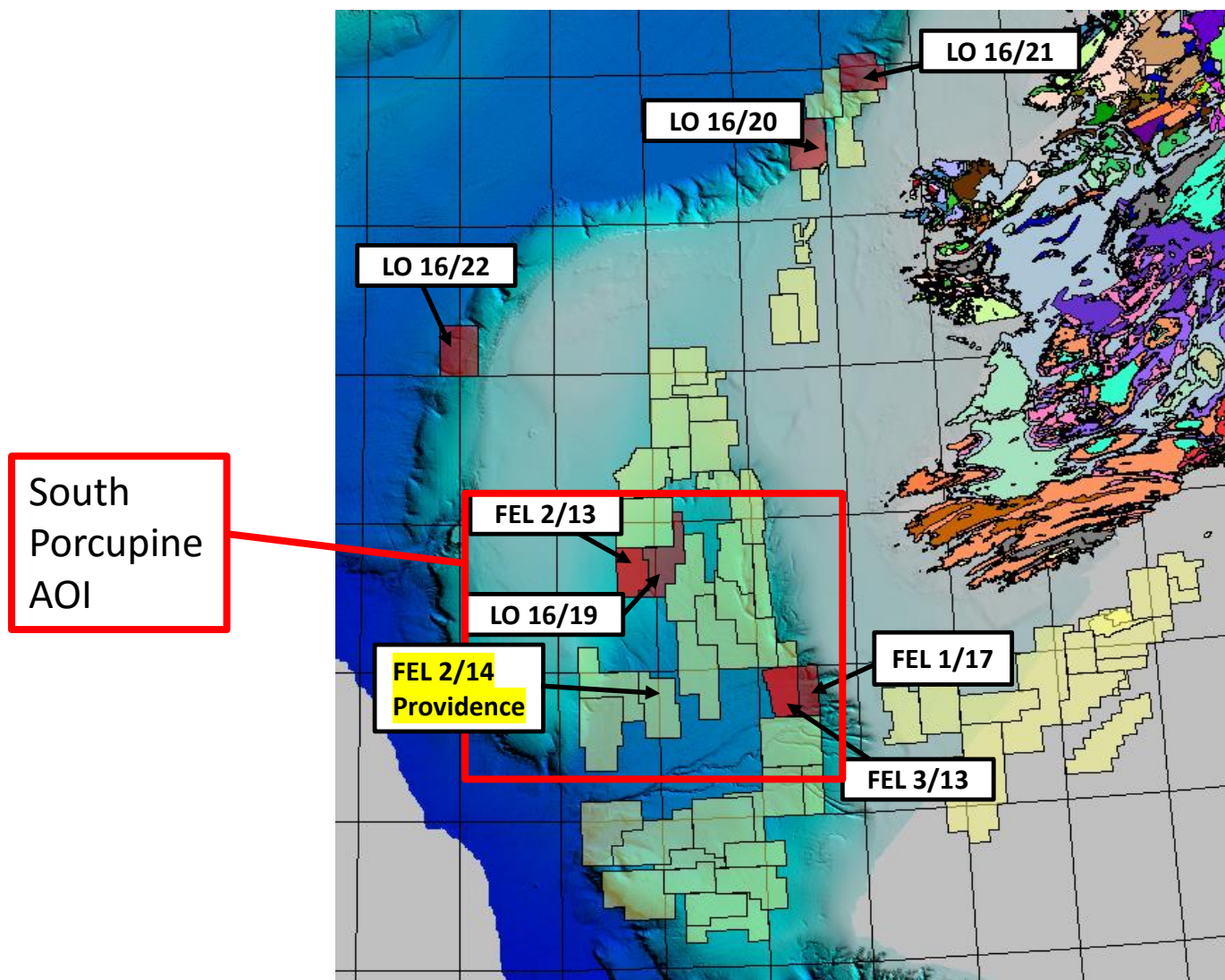
12 July 2017



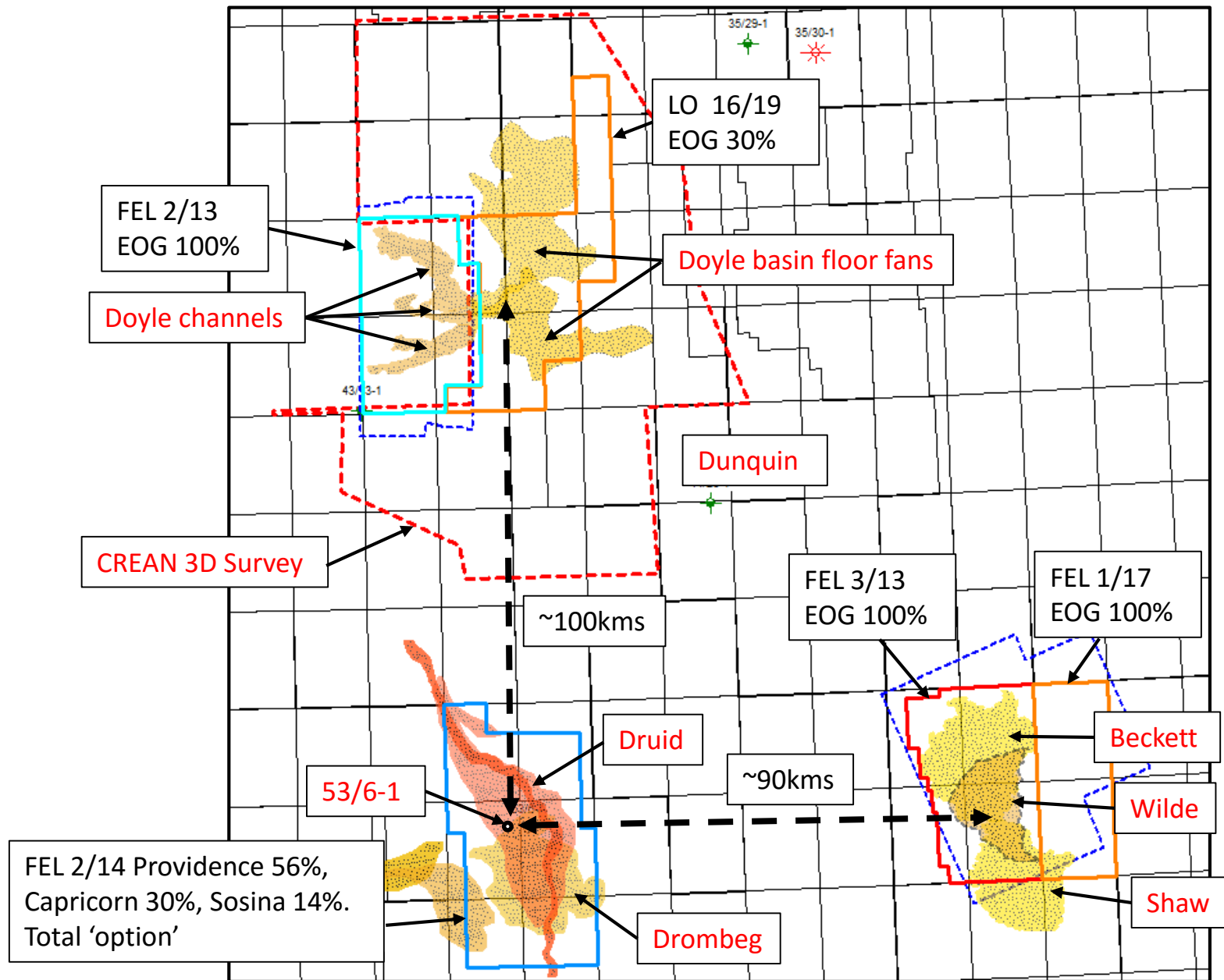
# Background

- Providence Resources spudded exploration well 53/6-1 in FEL 2/14 on 12 July 2017 in South Porcupine basin offshore Ireland
- The well will test the Druid Paleocene prospect and the Drombeg Cretaceous fan prospect
- For further information <http://bit.ly/2uhpn7W>
- The Providence well is significant for Europa since a positive drilling result has the potential to de-risk all of Europa's four licences in the South Porcupine and which may contain some 4.2 billion boe gross mean un-risked prospective resources
- The results of the Providence well are expected to become known over the coming 45-60 days

# Location Map

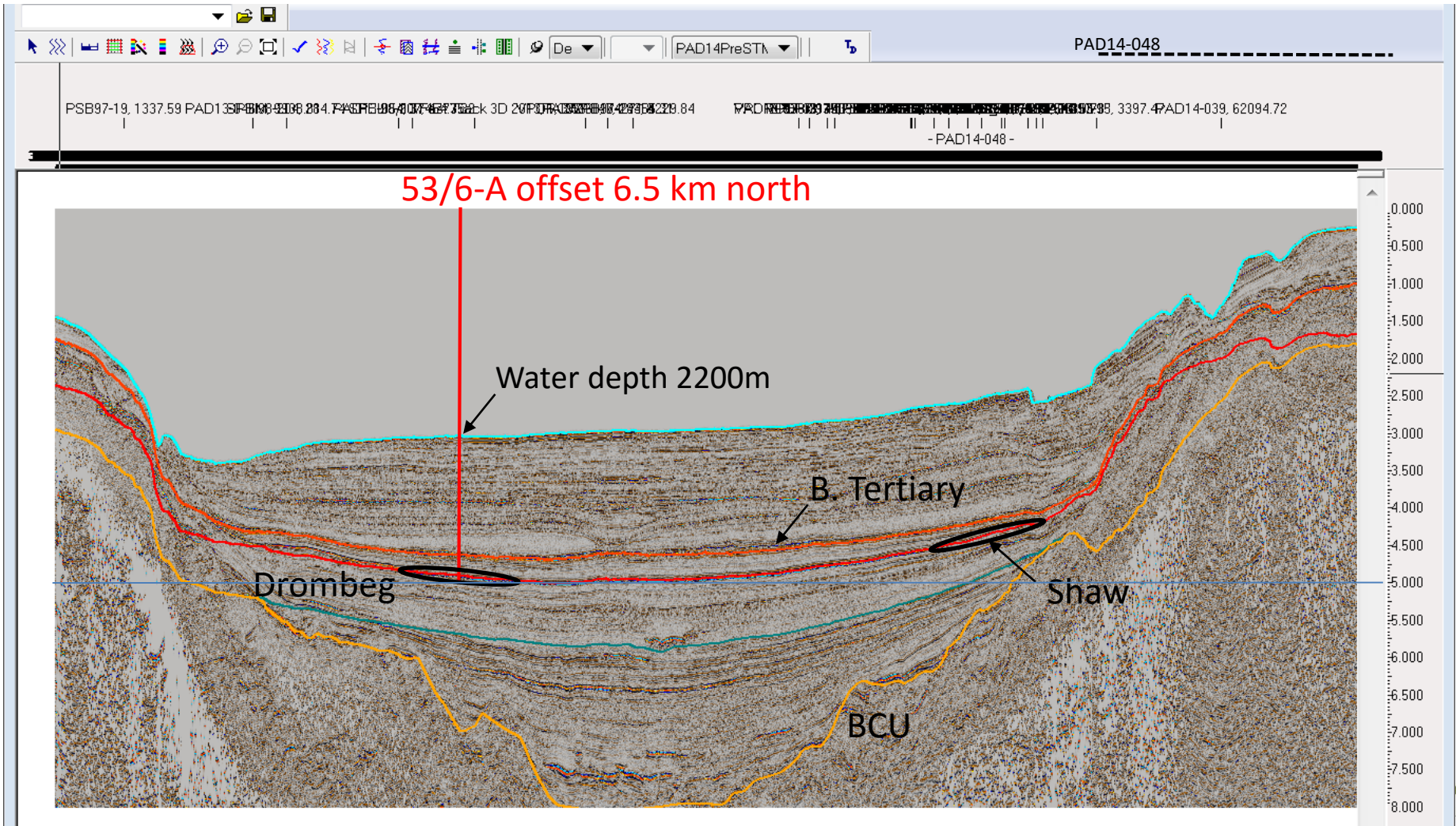


# South Porcupine AOI





# Providence's Drombeg fan is a Cretaceous fan at the same stratigraphic level as Europa's Beckett and Shaw fans in FEL 3/13



# Exploration success will de-risk the following in Europa's South Porcupine portfolio

- ~1 billion boe in Beckett and Shaw in FEL 3/13. Cretaceous fans, same age as Drombeg.
- 428 mm boe in Wilde in FEL 3/13. Cretaceous fan, slightly older than Drombeg.
- Up to 1 billion boe in LO 16/19. Cretaceous fans.
- 1 billion boe in FEL 1/17. Pre-rift prospects, success will de-risk source rock element of hydrocarbon play.
- 1 billion mmboe in FEL 2/13. Pre-rift and Cretaceous fan and slope prospects.