

**Visit us at booth 732
NAPE 2013 International Pavilion**

**Prospects Mullen & Kiernan in the South Porcupine
Basin Offshore Ireland**

**Hugh Mackay
Europa Oil & Gas**

www.europaoil.com

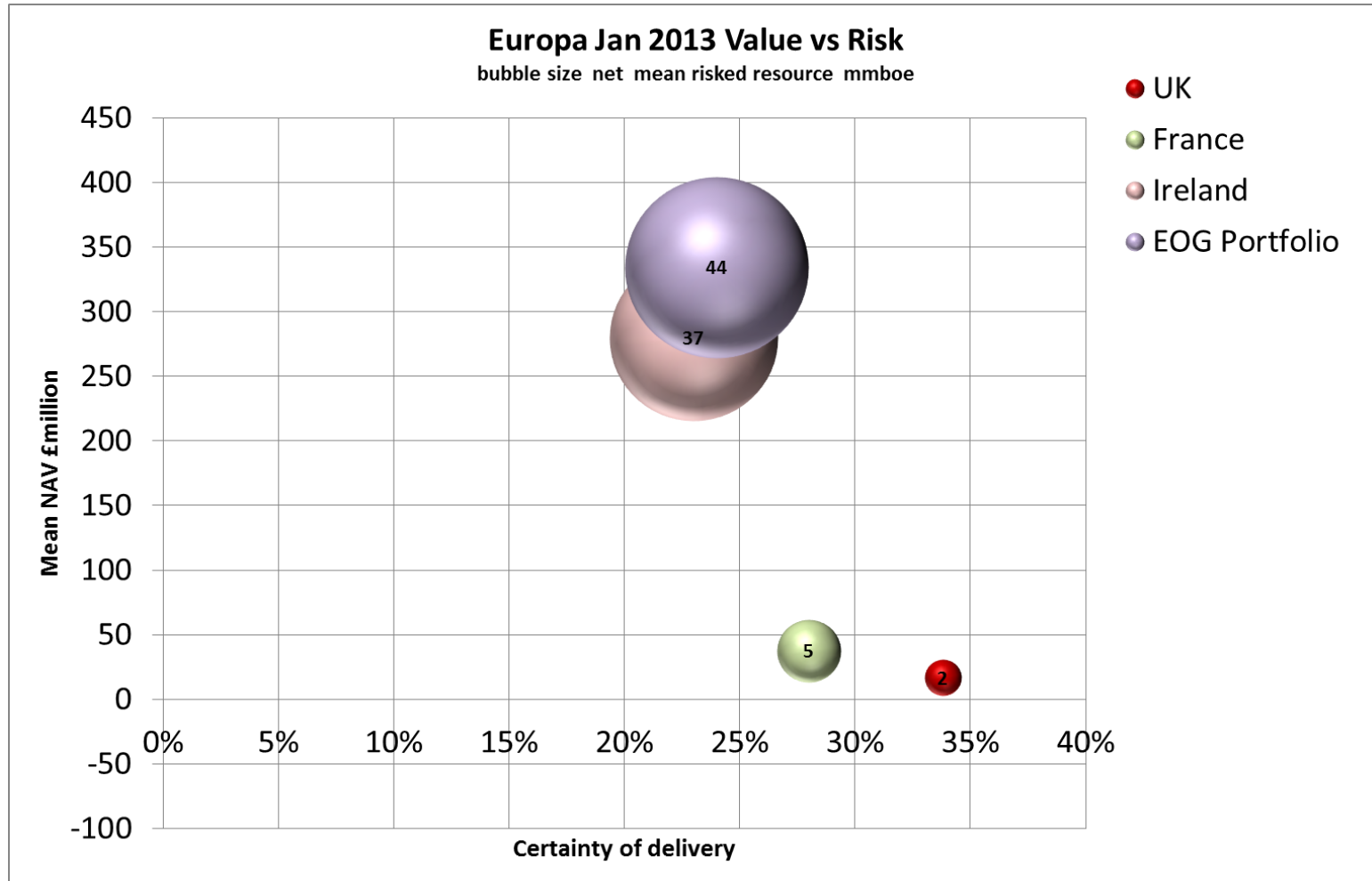
6 February 2013



Europa Oil & Gas (Holdings) PLC

- Registered in UK, listed on AIM, market cap £15 million/\$24 million
- Ticker EOG

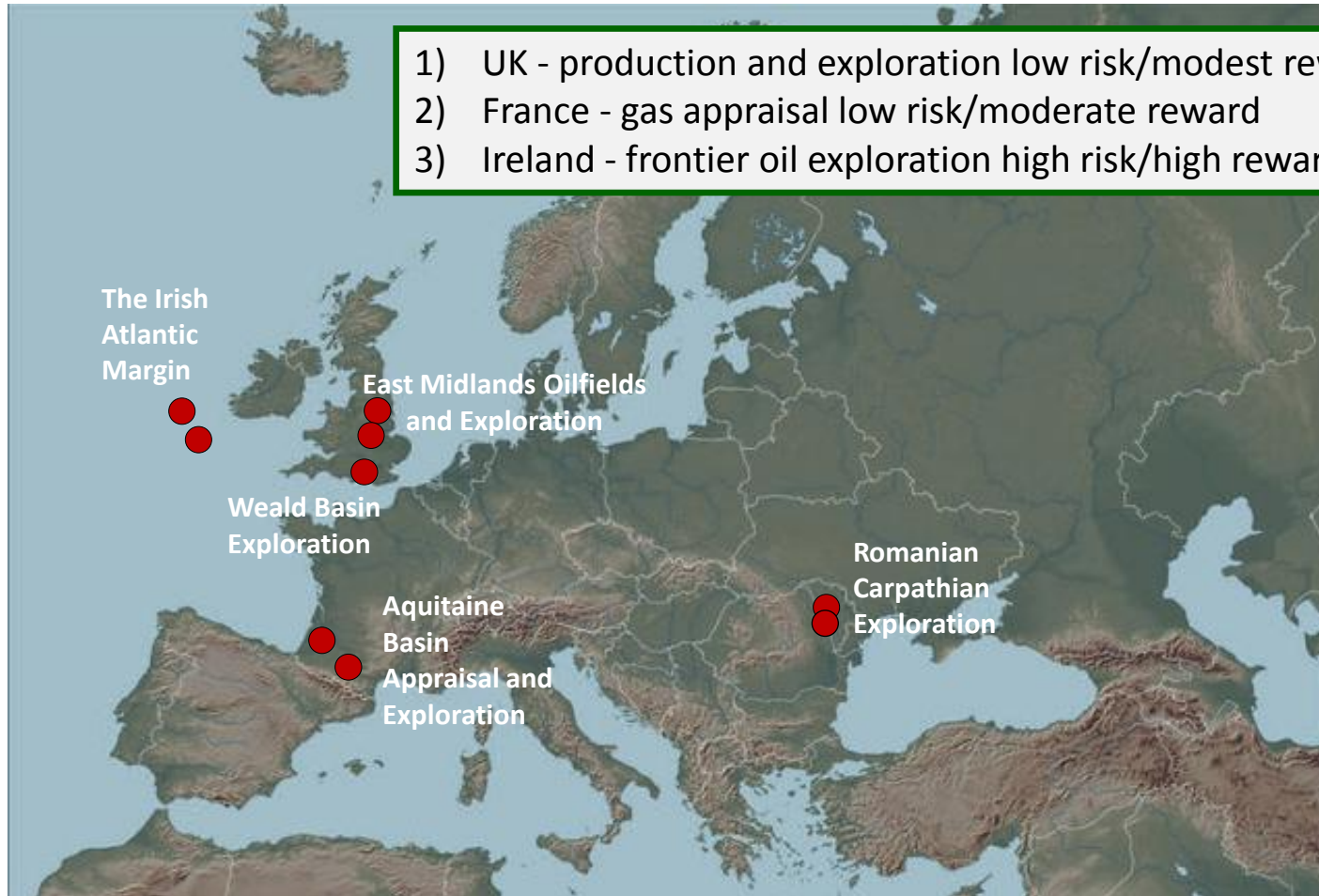
Europa Asset Portfolio Jan 2013



Europa Oil & Gas (Holdings) PLC Portfolio

Three core areas : UK, France and Ireland

- 1) UK - production and exploration low risk/modest reward
- 2) France - gas appraisal low risk/moderate reward
- 3) Ireland - frontier oil exploration high risk/high reward



The Irish
Atlantic
Margin

East Midlands Oilfields
and Exploration

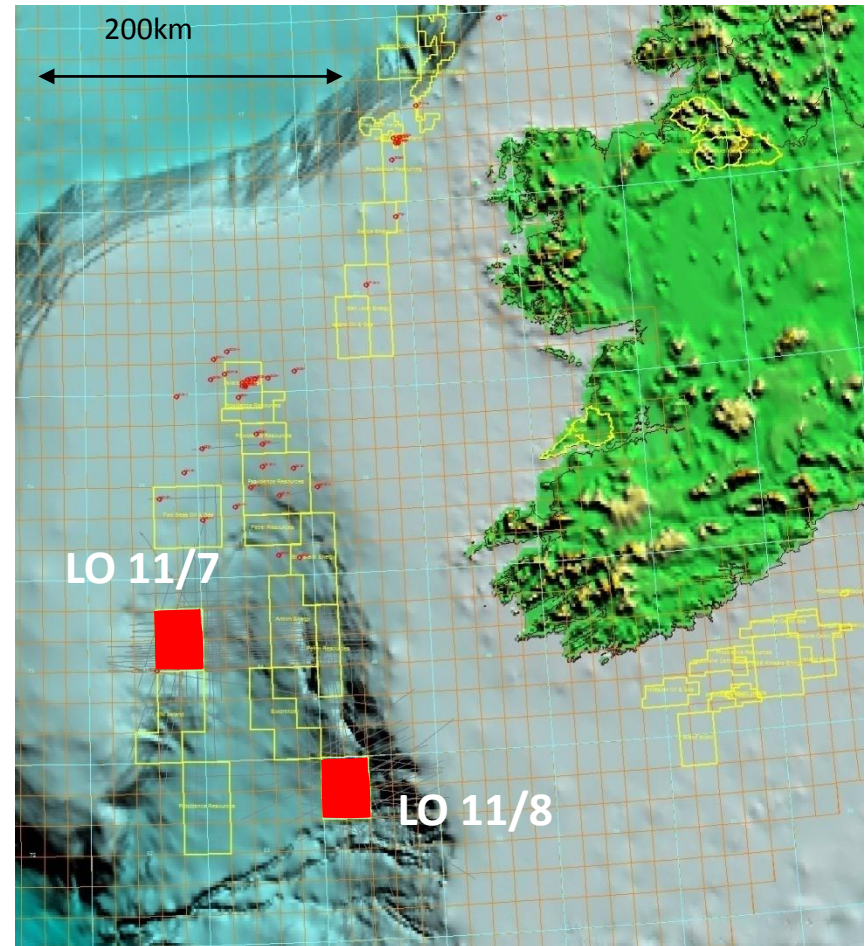
Weald Basin
Exploration

Aquitaine
Basin
Appraisal and
Exploration

Romanian
Carpathian
Exploration

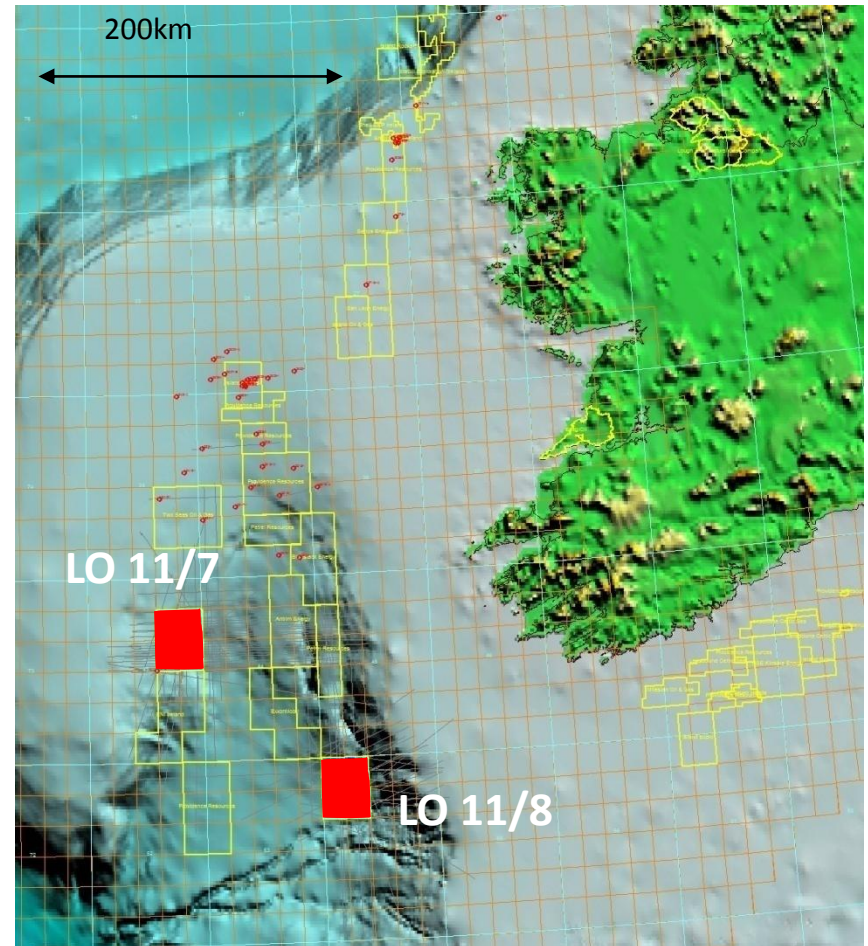
Location

- South Porcupine Basin, underexplored
- 100% equity in two licence options LO 11/7 and LO 11/8, 1000 km² each
- Large Lower Cretaceous clastic prospects with amplitude support
 - Proven play at Burren (North Porcupine), flowed oil
 - Potentially very large volumes
- Excellent fiscal terms (25-40% PRT)
- Moderate to deep water prospects (1000-2000m)
- Similar operating environment to West of Shetlands
- Seeking JV partner to take to a frontier exploration license, derisk and drill

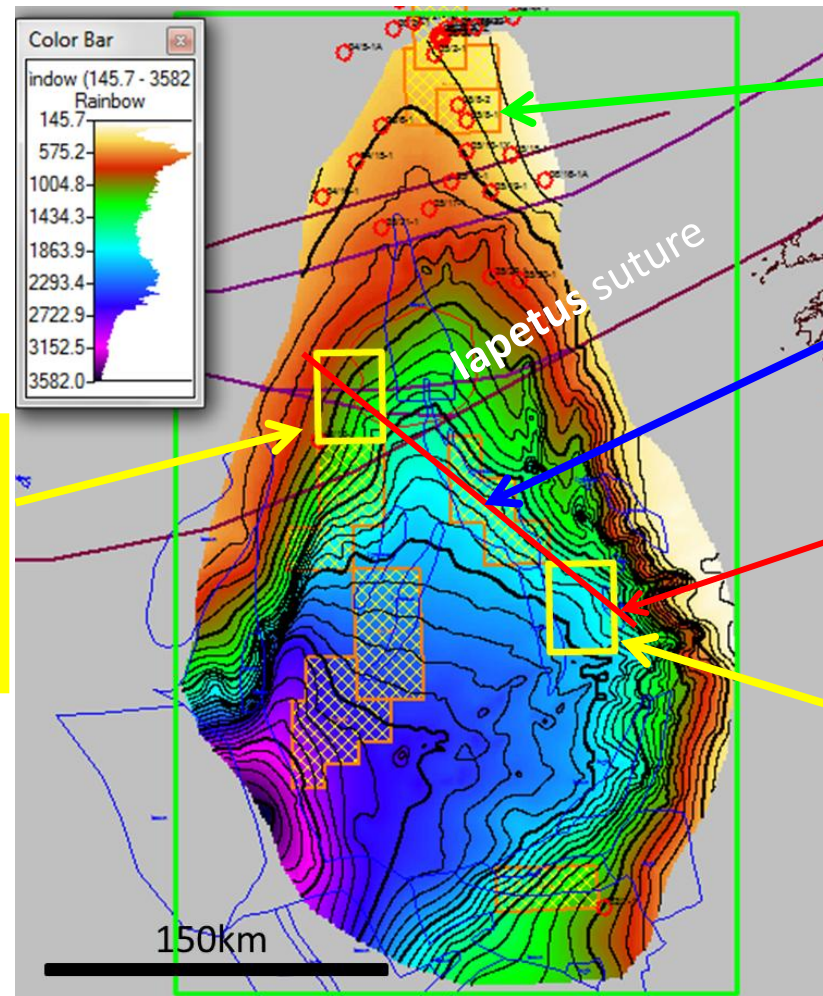


Licence details

- License Option
 - 1Nov 11 – 31 Oct 13
- Apply for Frontier Exploration Licence
 - Relinquish minimum 25%
 - 15 years duration
 - 1 phase of 3 years followed by 3 phases of 4 years each.
 - seismic and well commitments



Porcupine Basin Water Depth (m)



Burren

Lower Cretaceous oil discovery ~375 bopd

Dunquin

Middle Cretaceous Carbonate prospect
8.4 TCF + 316 MMBO drill Q1 2013

LO 11/7 Mullen

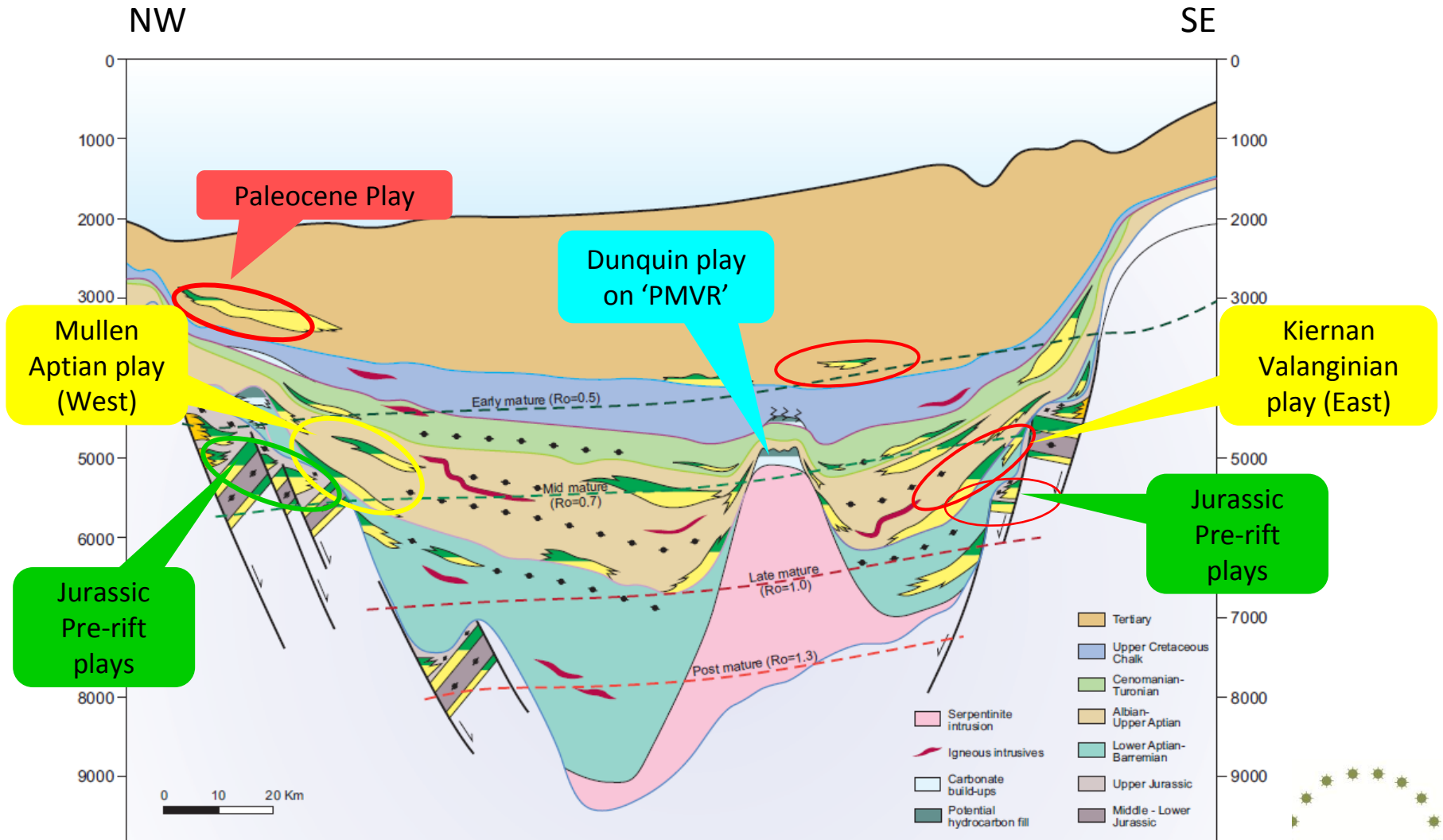
Lower Cretaceous play
800m-1400m water depth, limit of fixed platform

Line of section

LO 11/8 Kiernan

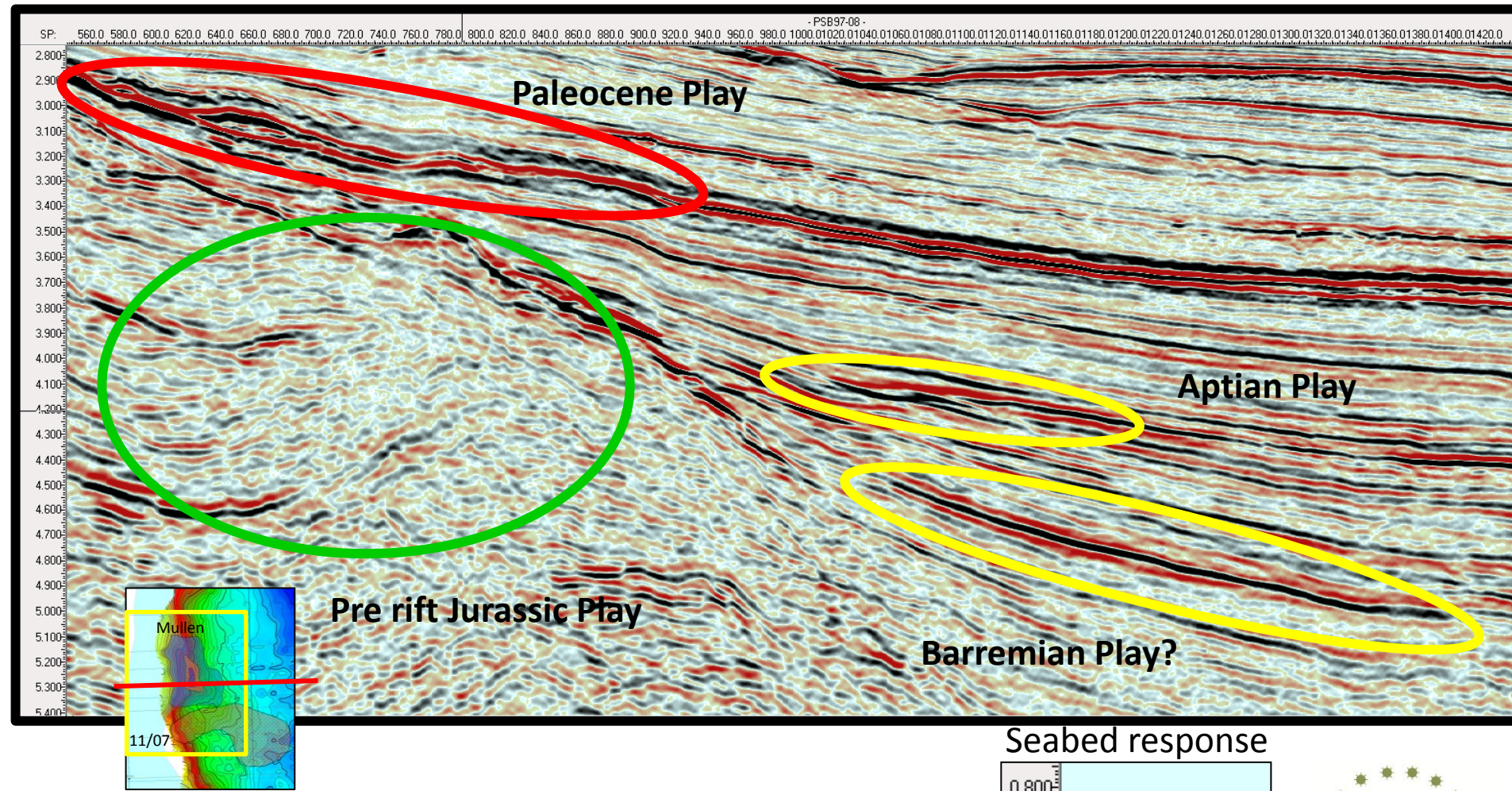
Lower Cretaceous play
1800-1925m water depth, most likely suited to FPS

South Porcupine Basin Cross Section



PMVR: Porcupine Median Volcanic Ridge
 Cross-section courtesy of PhysicalGeo Limited

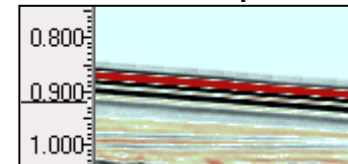
Line PSB97-08 LO 11/7 Mullen Plays



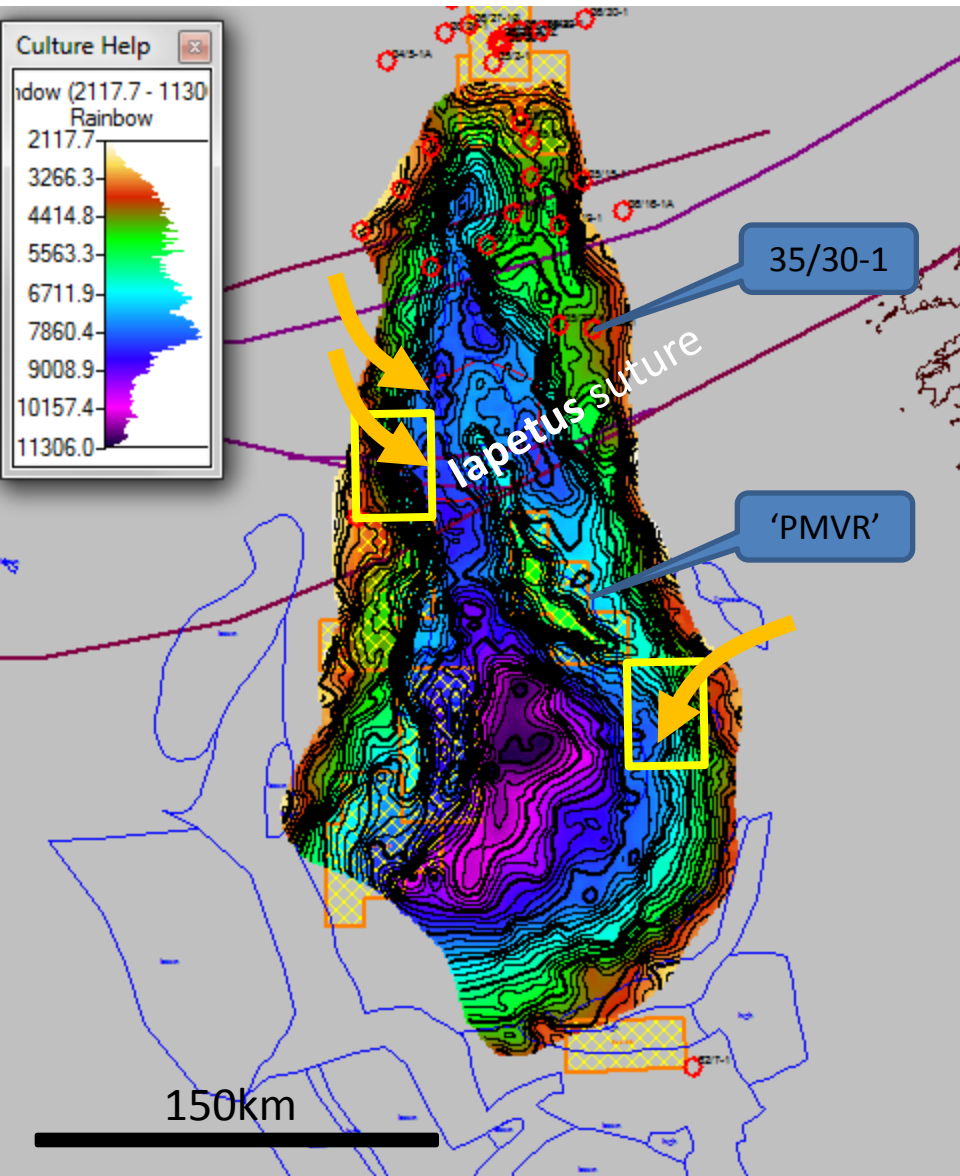
Polarity : black peak decrease in acoustic impedance

Data shown courtesy of TGS and WesternGeco

Seabed response



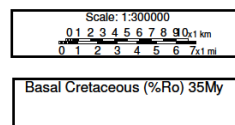
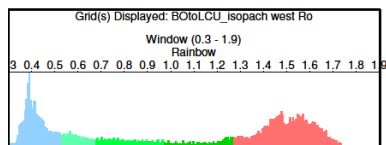
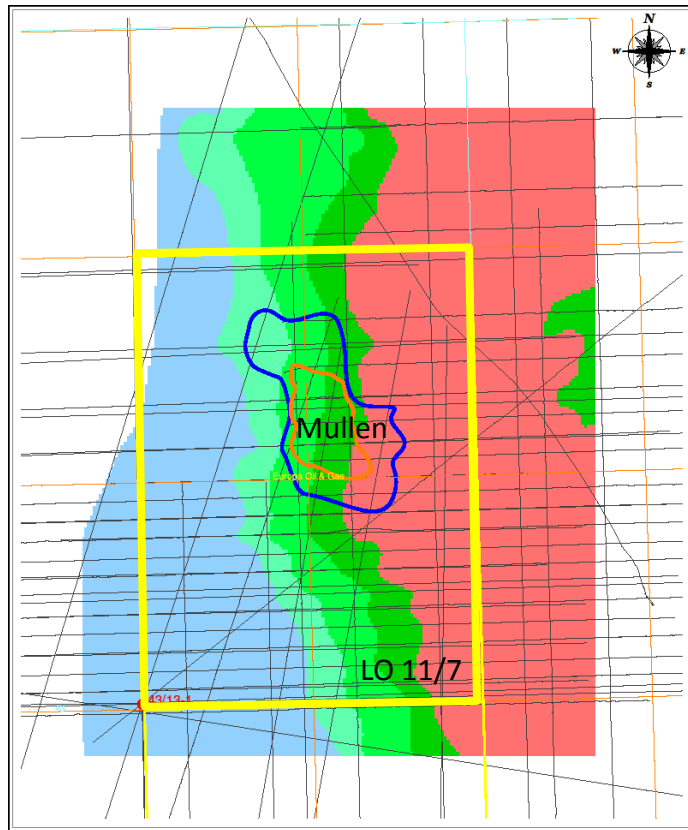
Base Cretaceous Depth map (m)



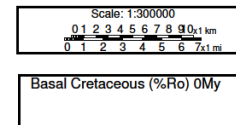
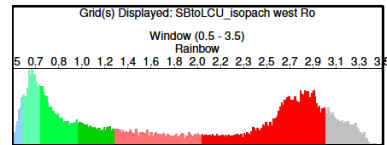
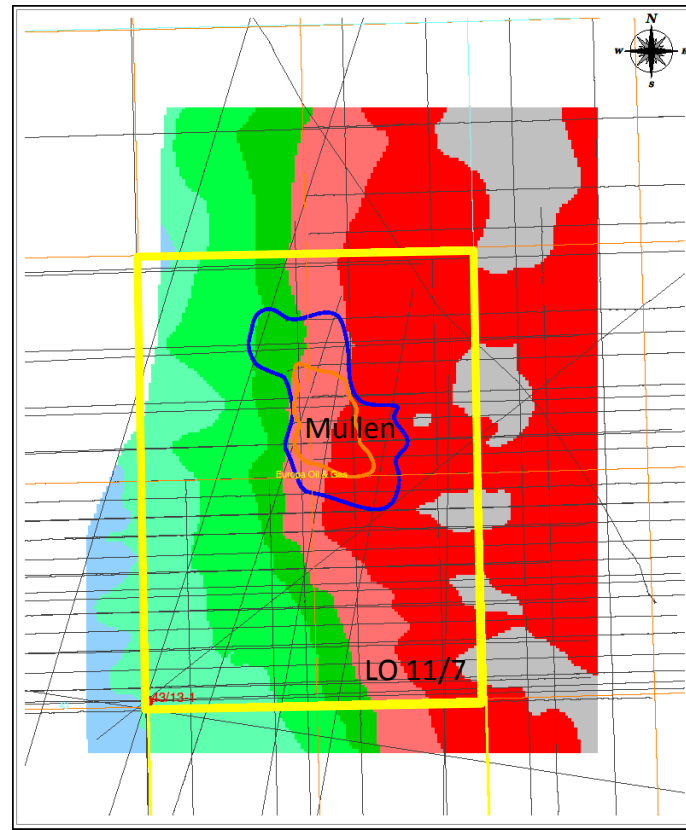
- Combined map of Late Cimmerian Unc. and PMVR structure.
- Arrows indicate possible Lower Cretaceous sand provenance directions
 - From Porcupine High in West
 - From Munster basin (ORS) in East

Mullen – Jurassic source maturity

Top Jurassic maturity 35 My

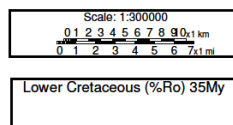
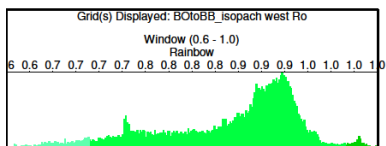
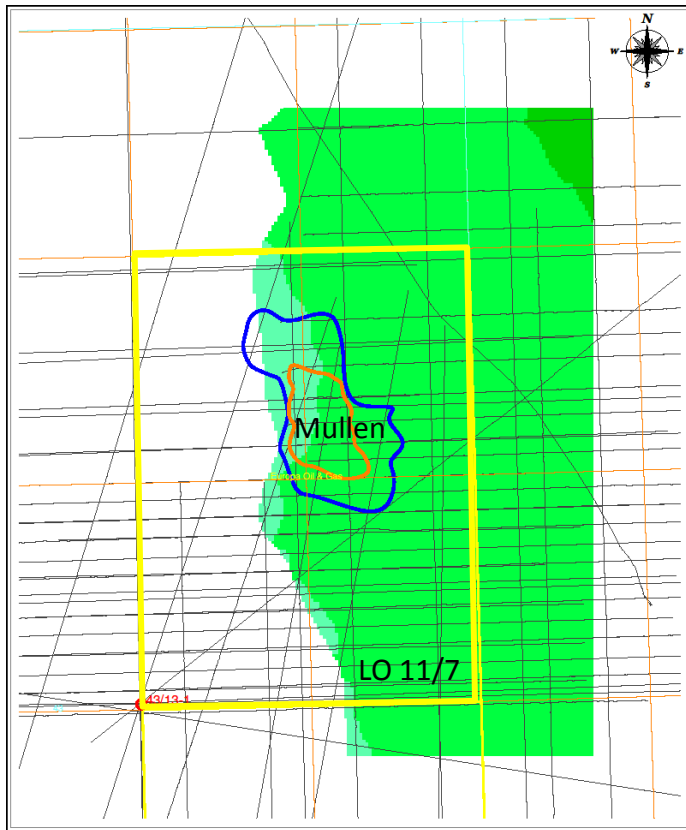


Top Jurassic maturity 0 My

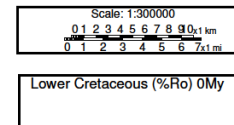
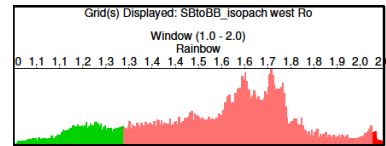
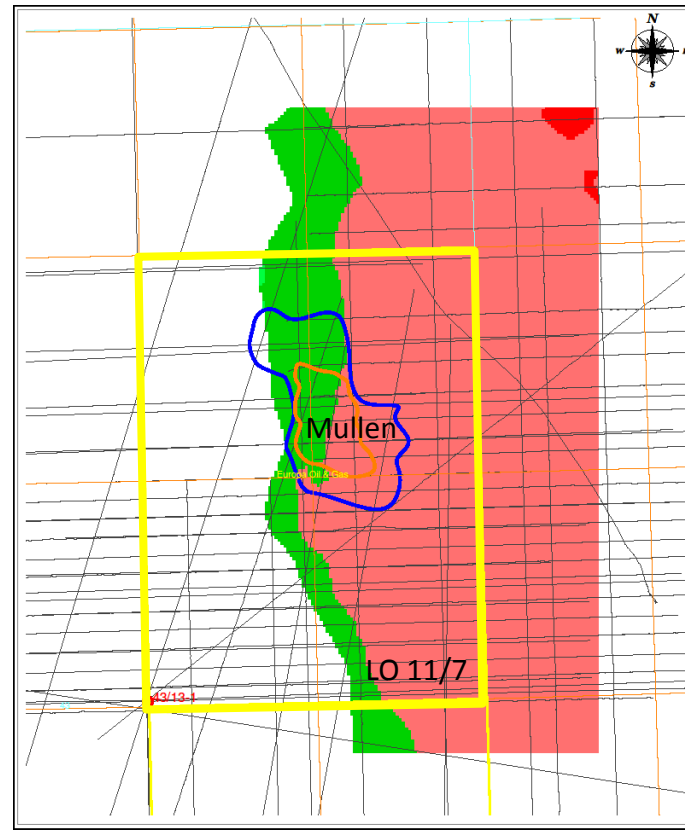


Mullen – Cretaceous source maturity

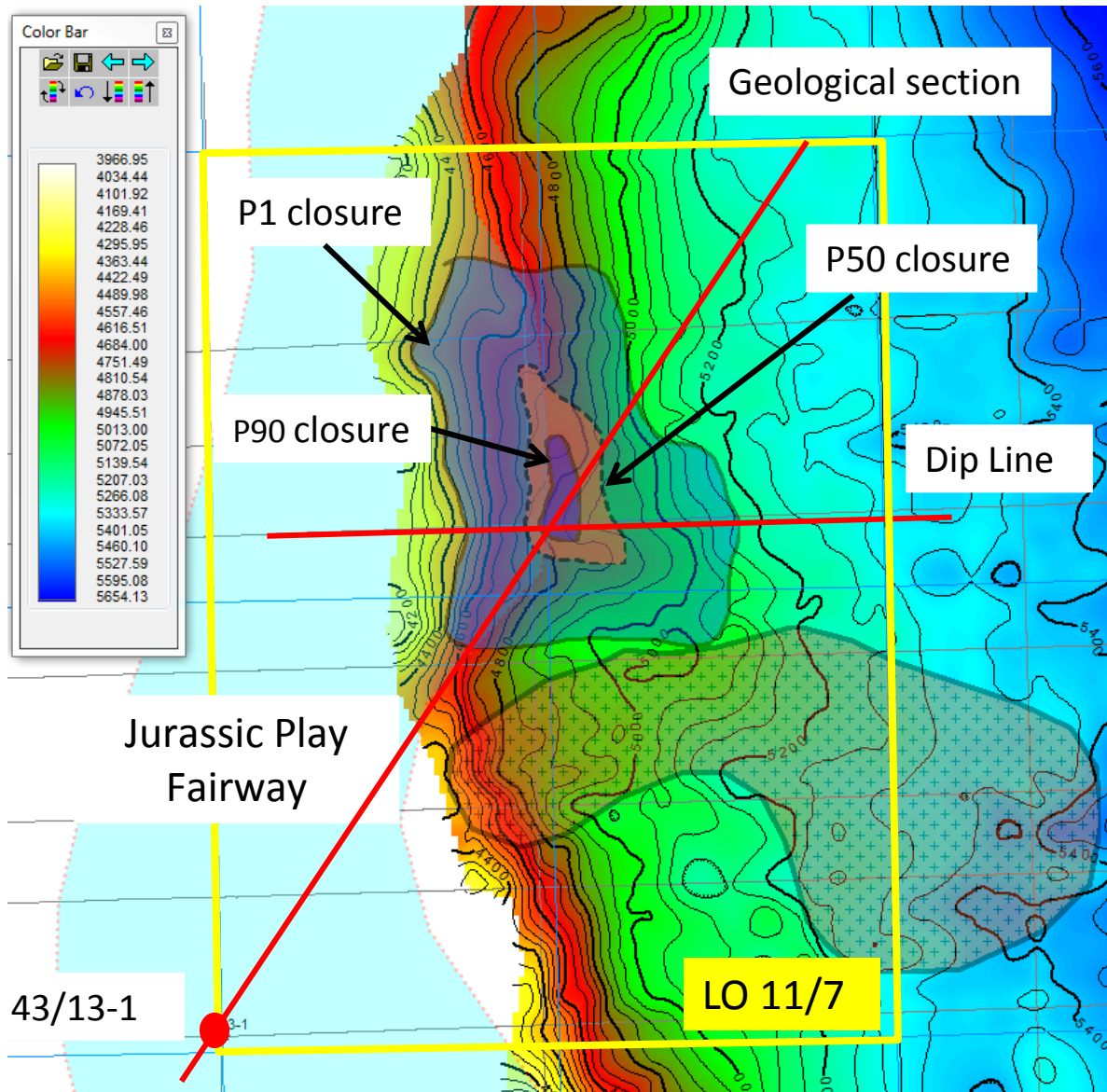
Lower Cretaceous maturity 35 My



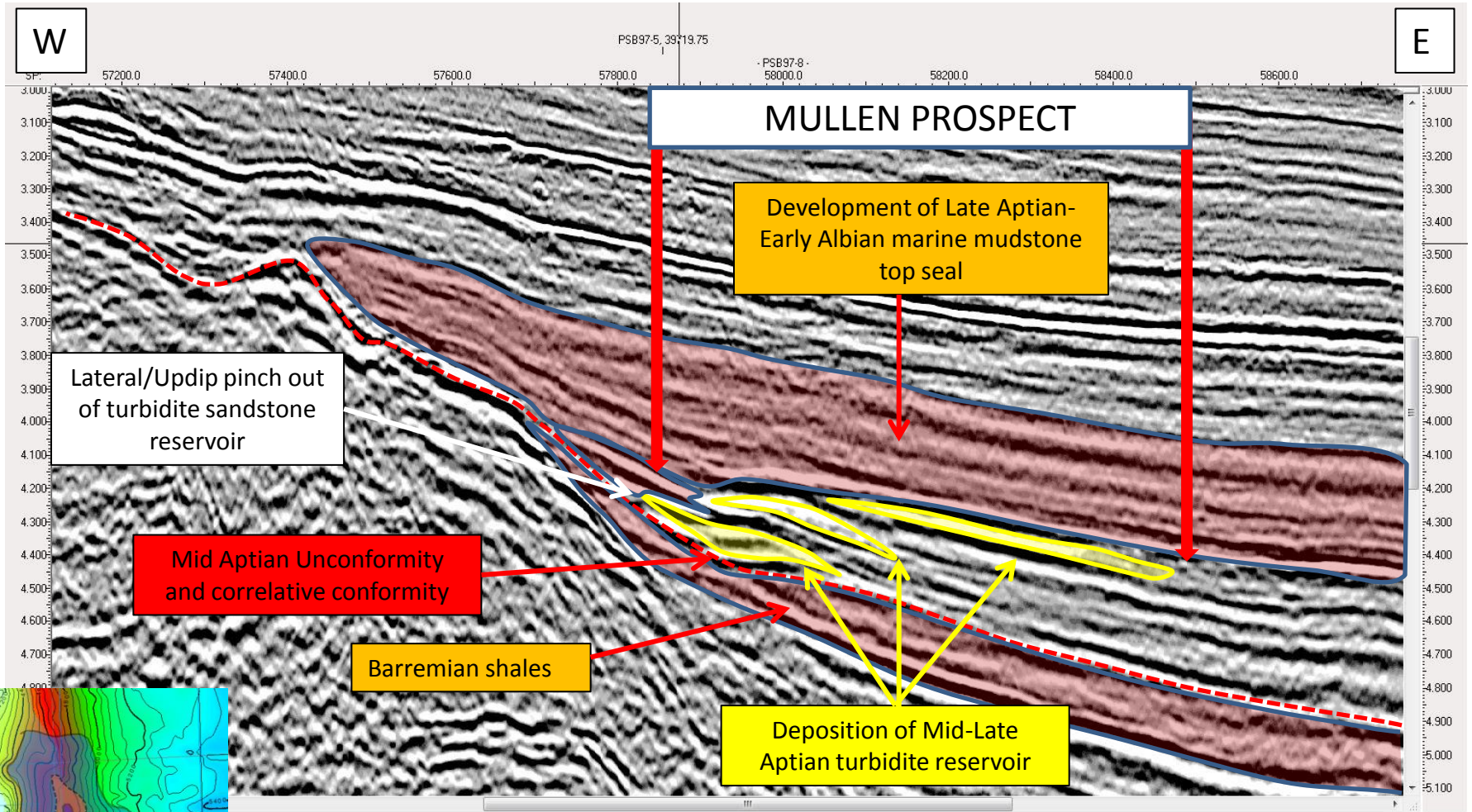
Lower Cretaceous maturity 0 My



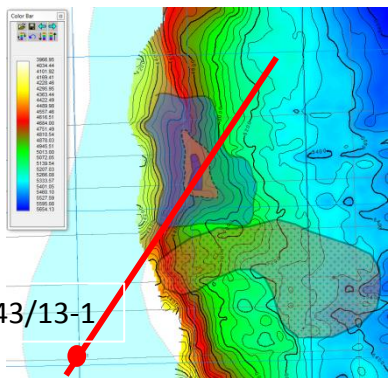
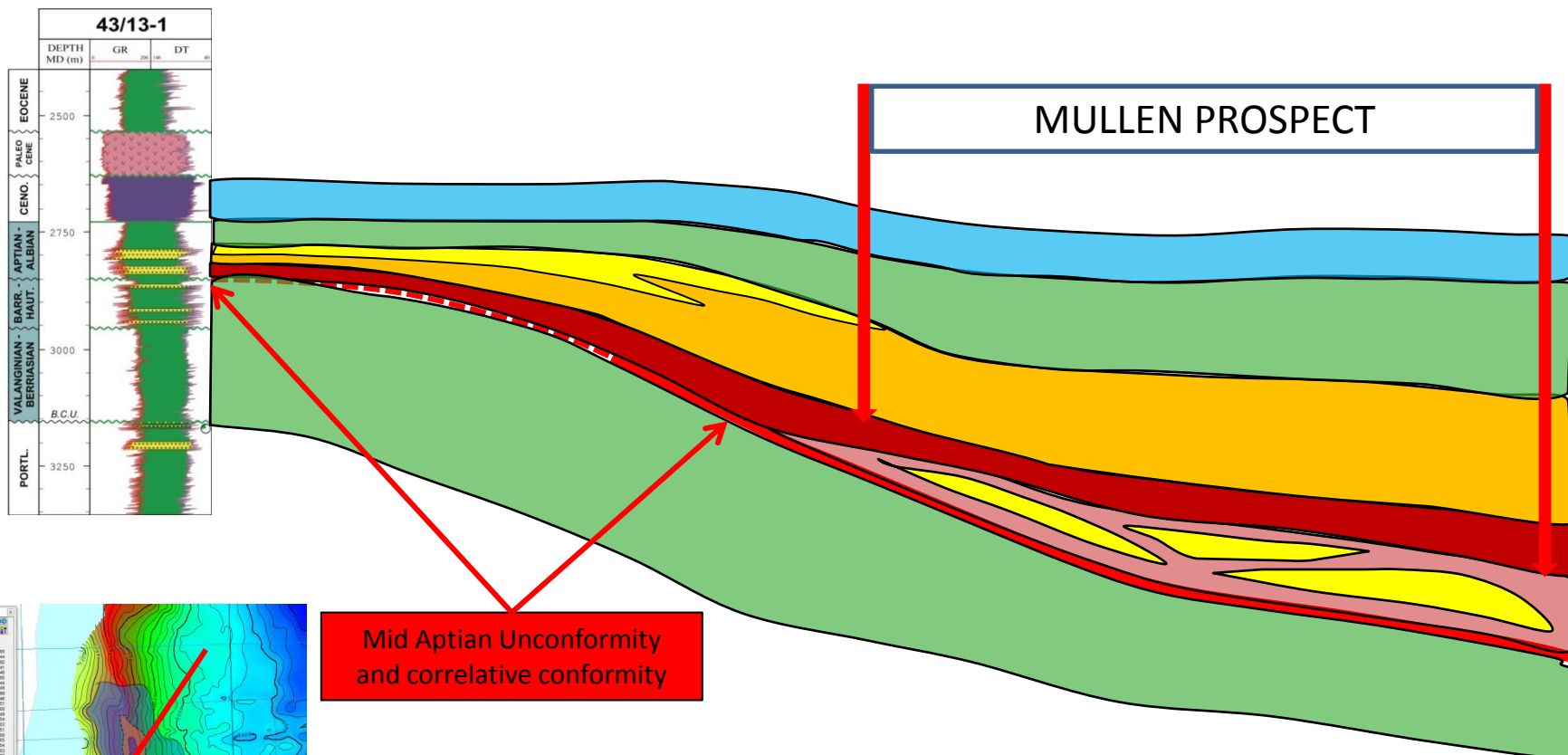
Mullen Aptian Depth Map (m)



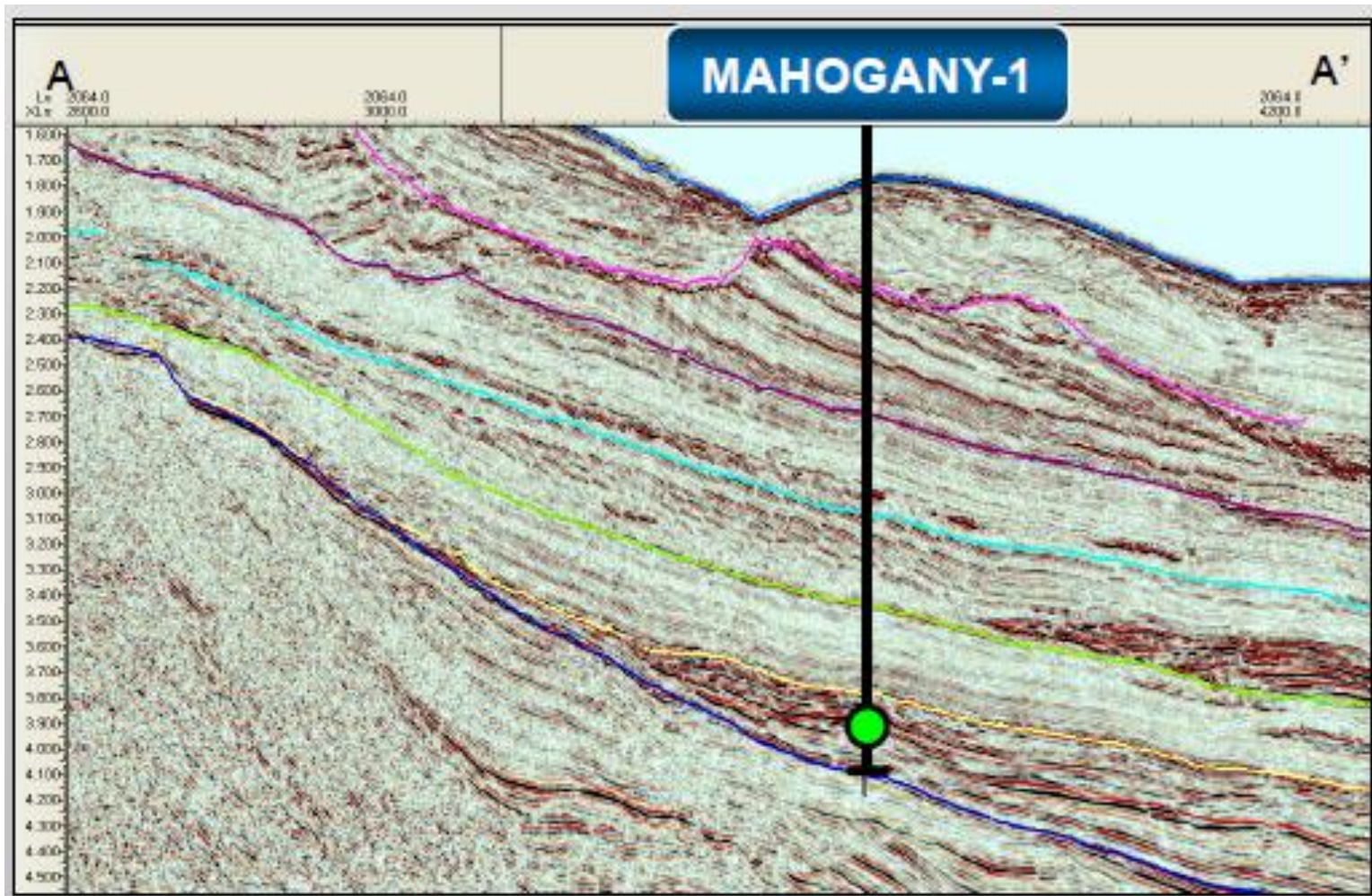
Geoseismic Section: Mullen Dip Line



Geoseismic Section

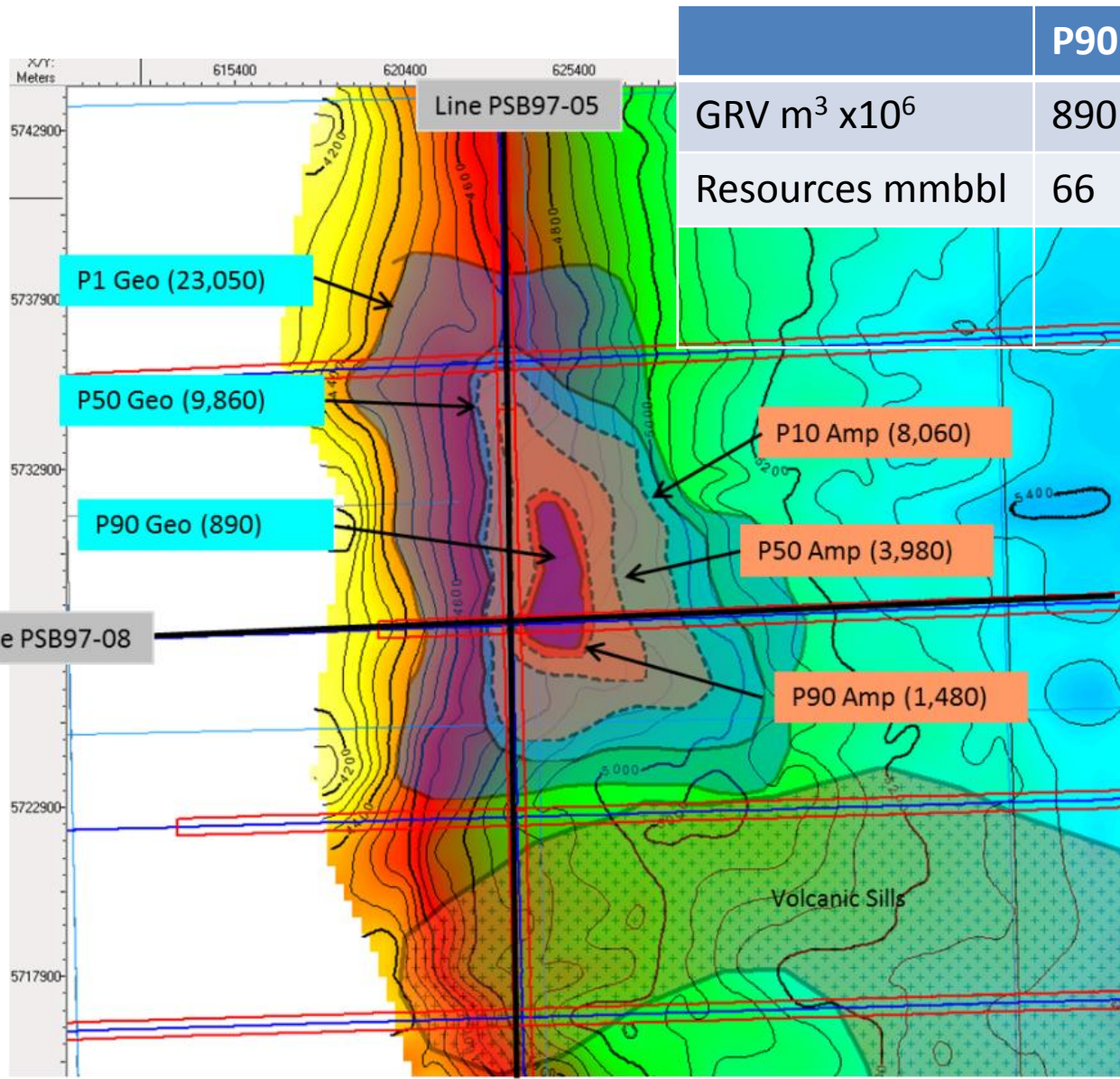


Analogues- African transform margin



Cretaceous turbidite sandstones in stratigraphic traps

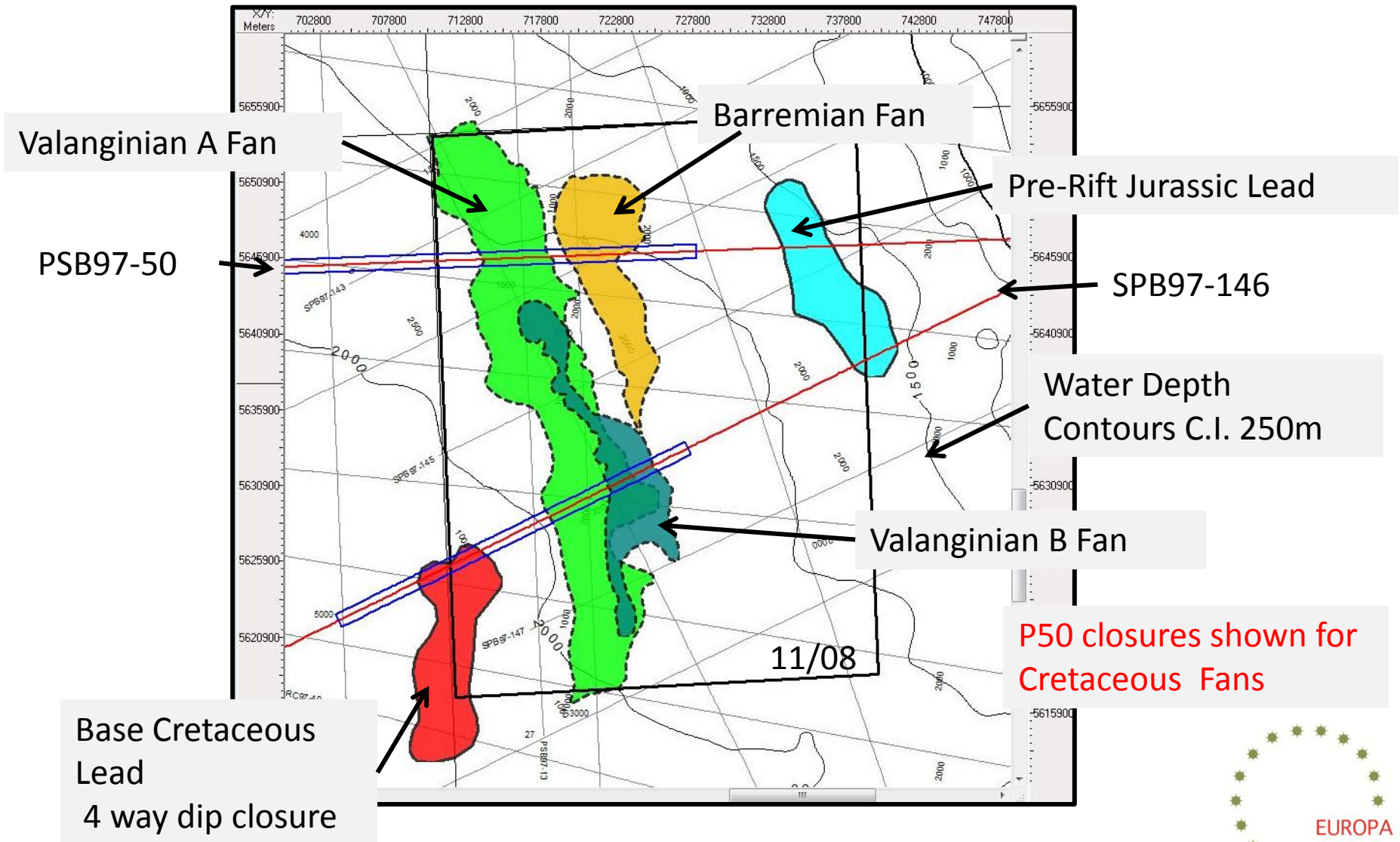
Mullen Volumetrics and Resources



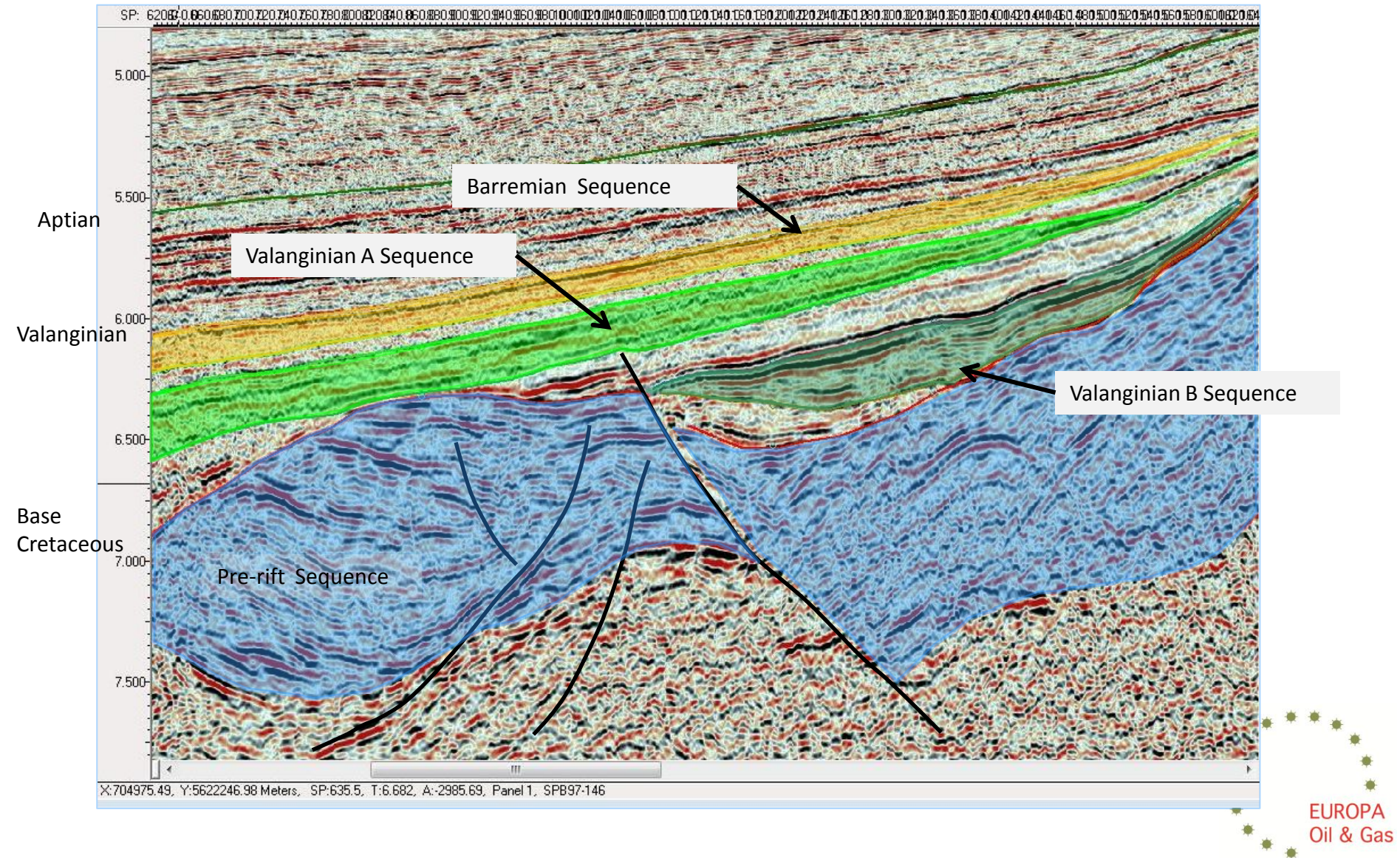
Closure defined by structural and stratigraphic mapping

Amplitude supported closures

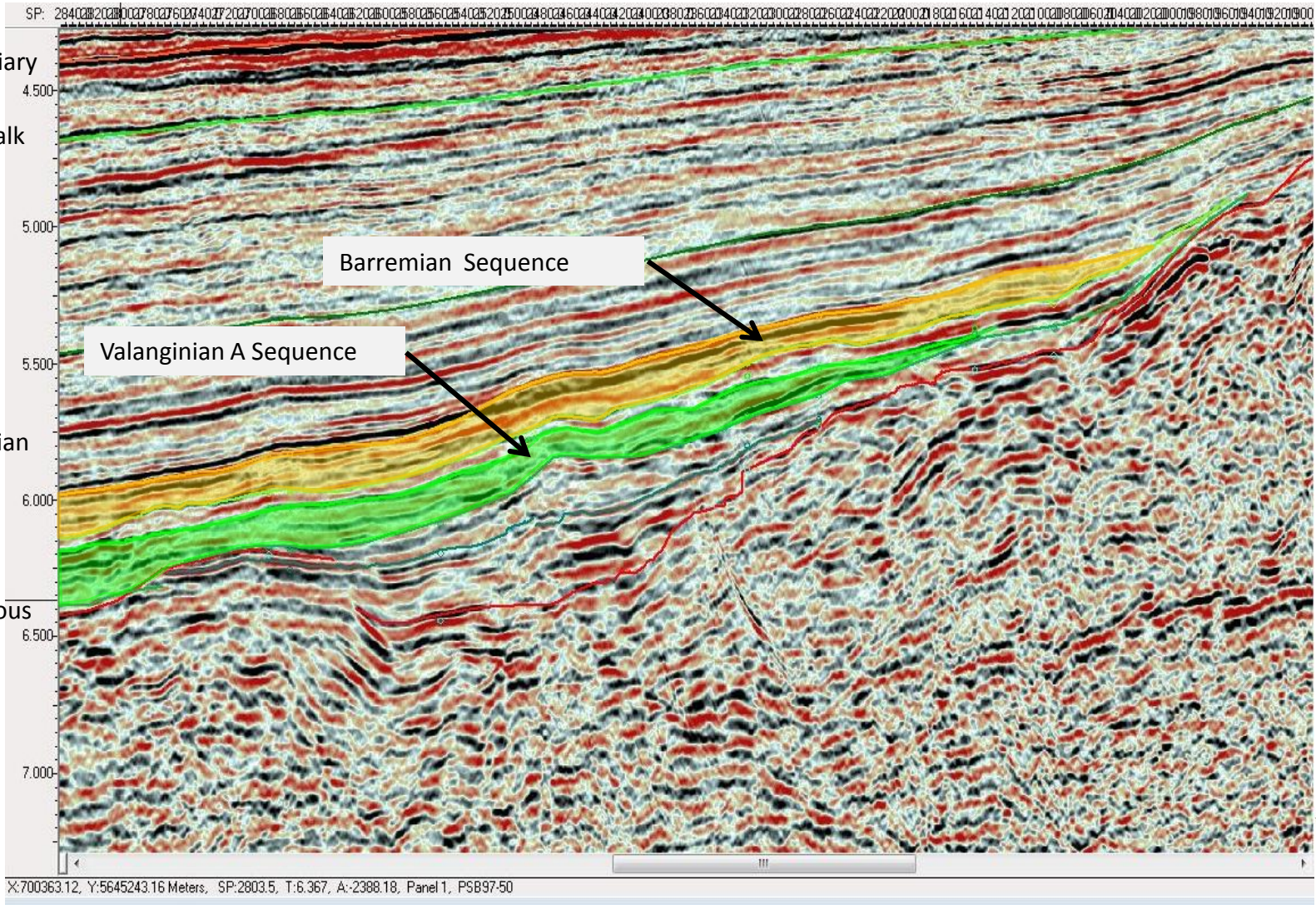
11/08 Kiernan prospect and Leads



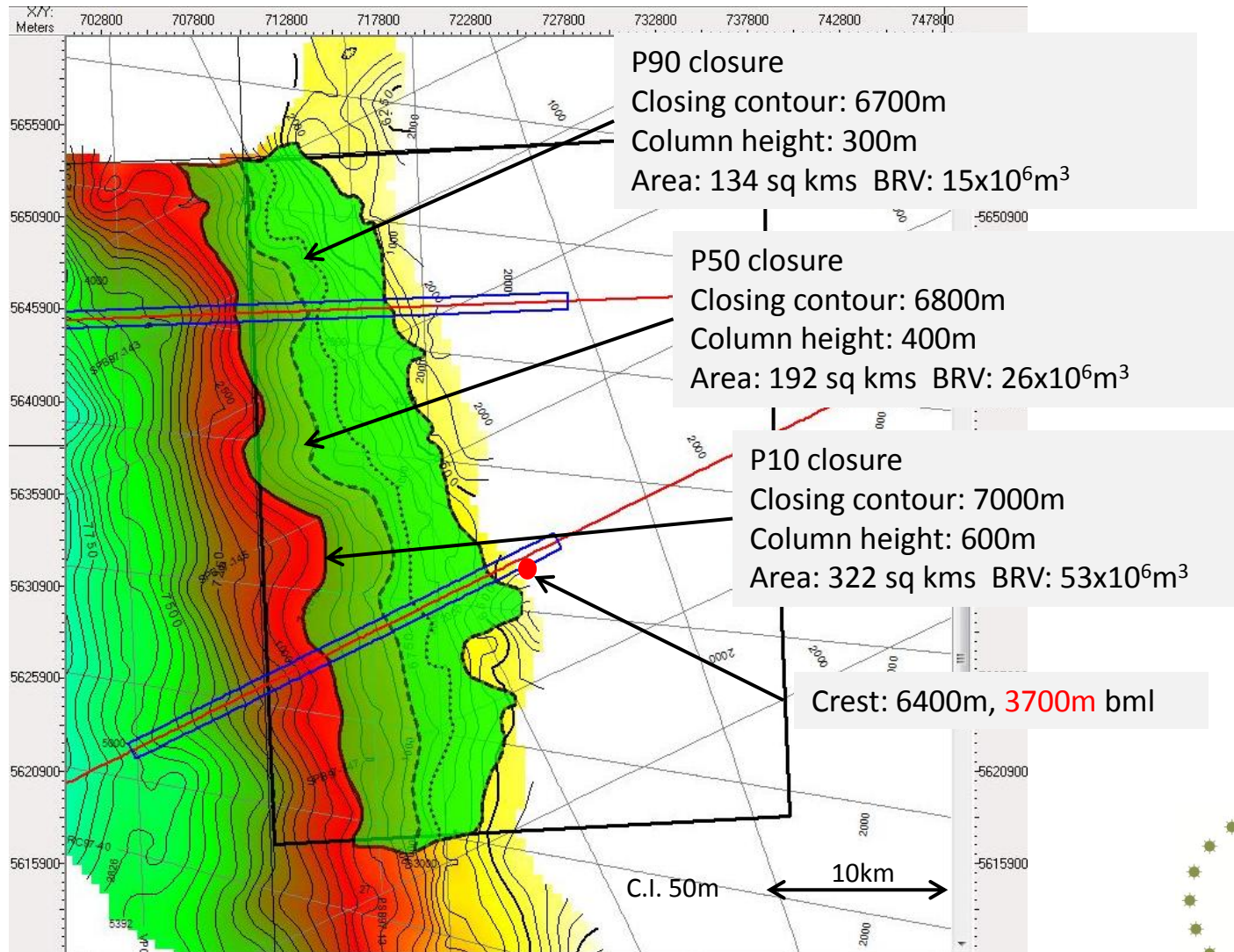
Line SPB97-146



Line PSB97-50

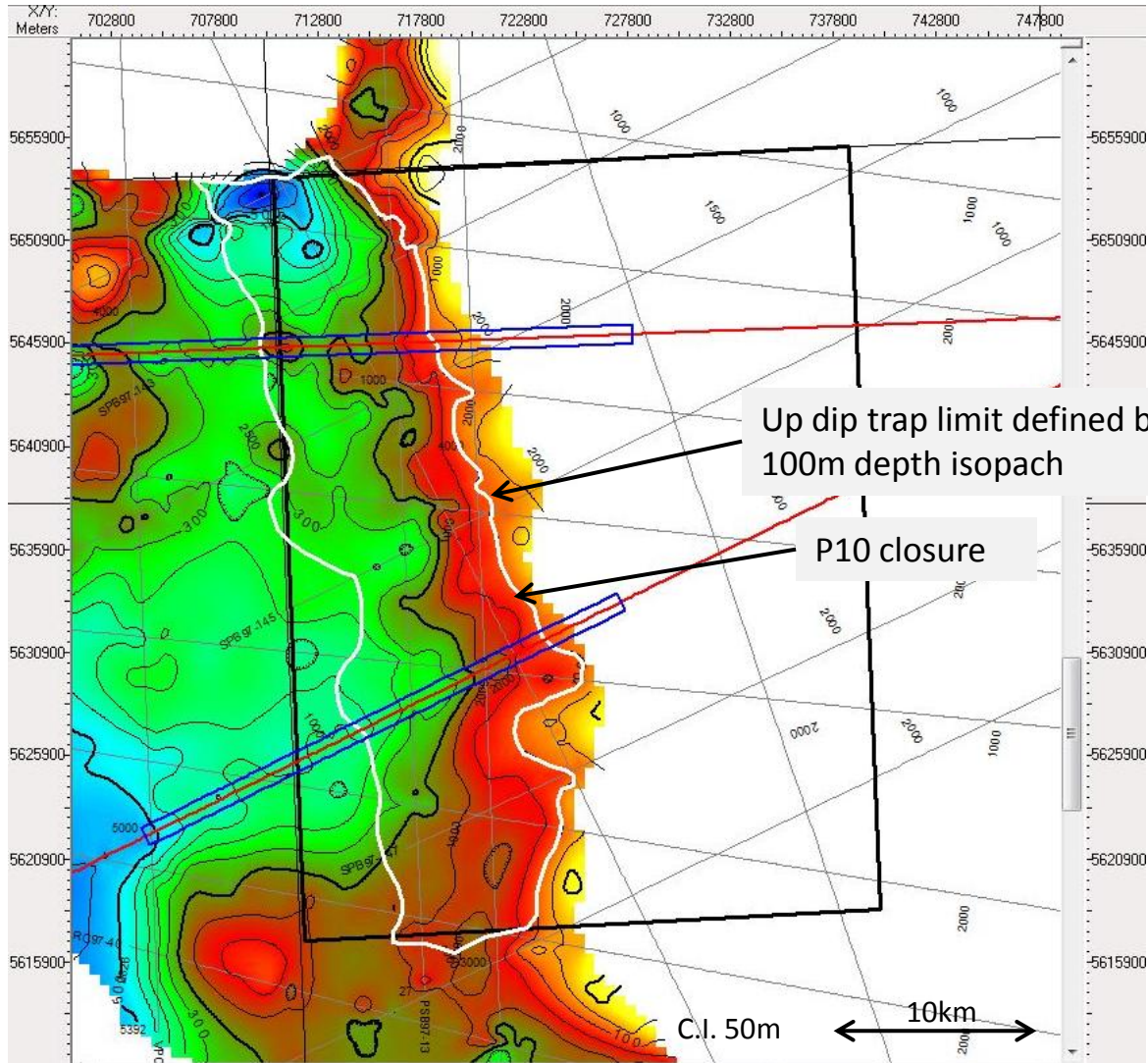


Top Valanginian A Fan Depth map (m) with P10-P50-P90 closures

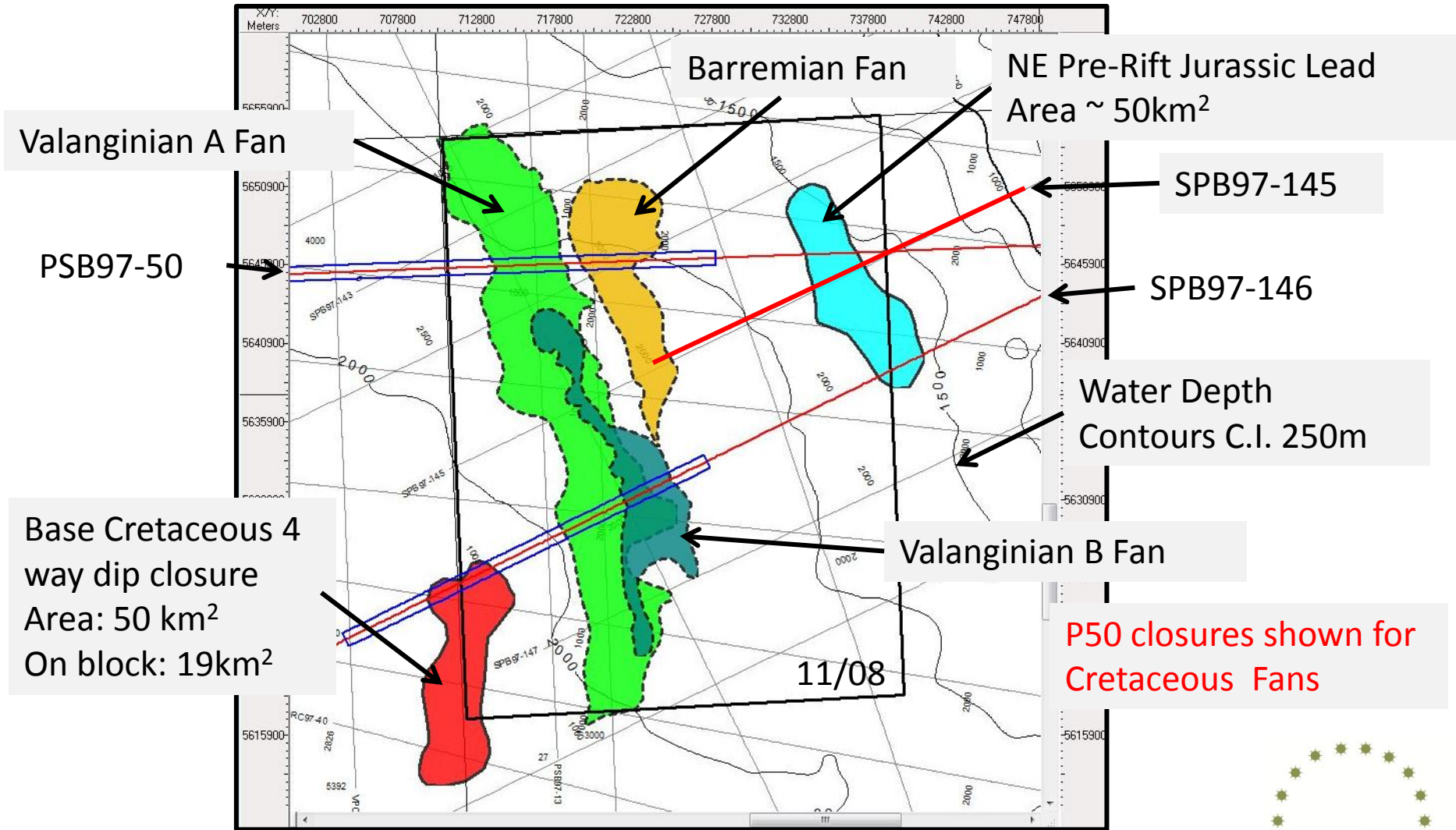


Top Valanginian A Depth map (m) with P10-P50-P90

closures + Fan isopach **map**

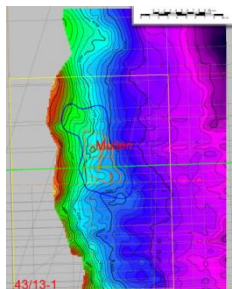


11/08 Prospects and Leads

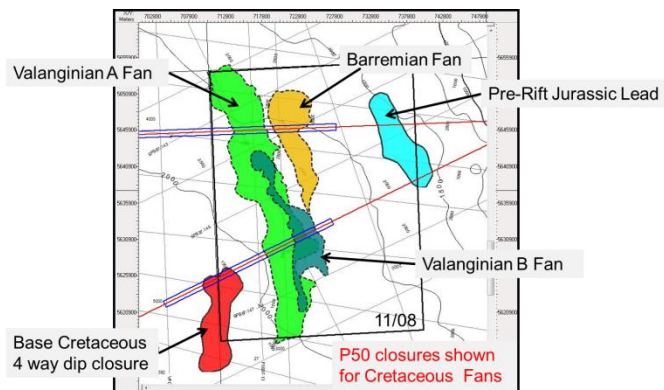


P50 closures shown for Cretaceous Fans

Prospectivity



Western Tranche
“Mullen” with 0.5
billion bbl mean
unrisked reserve



Eastern Tranche
“Kiernan” with 1.6
billion boe* mean
unrisked reserve

Oil Case

Licence	Lead	Reservoir	Water	Reservoir	Resources			
			Depth	Depth	P90	P50	P10	Mean
			m	mbml	mmbbl	mmbbl	mmbbl	mmbbl
Western	Mullen	Aptian	1000	2850	66	318	1092	482
Eastern	Kiernan	Valanginian A	2000	4400	189	712	2063	977
Eastern	Kiernan	Valanginian B	2000	4700	29	130	710	280
Eastern	Kiernan	Barremian	1800	3700	78	269	746	355
TOTAL								2094

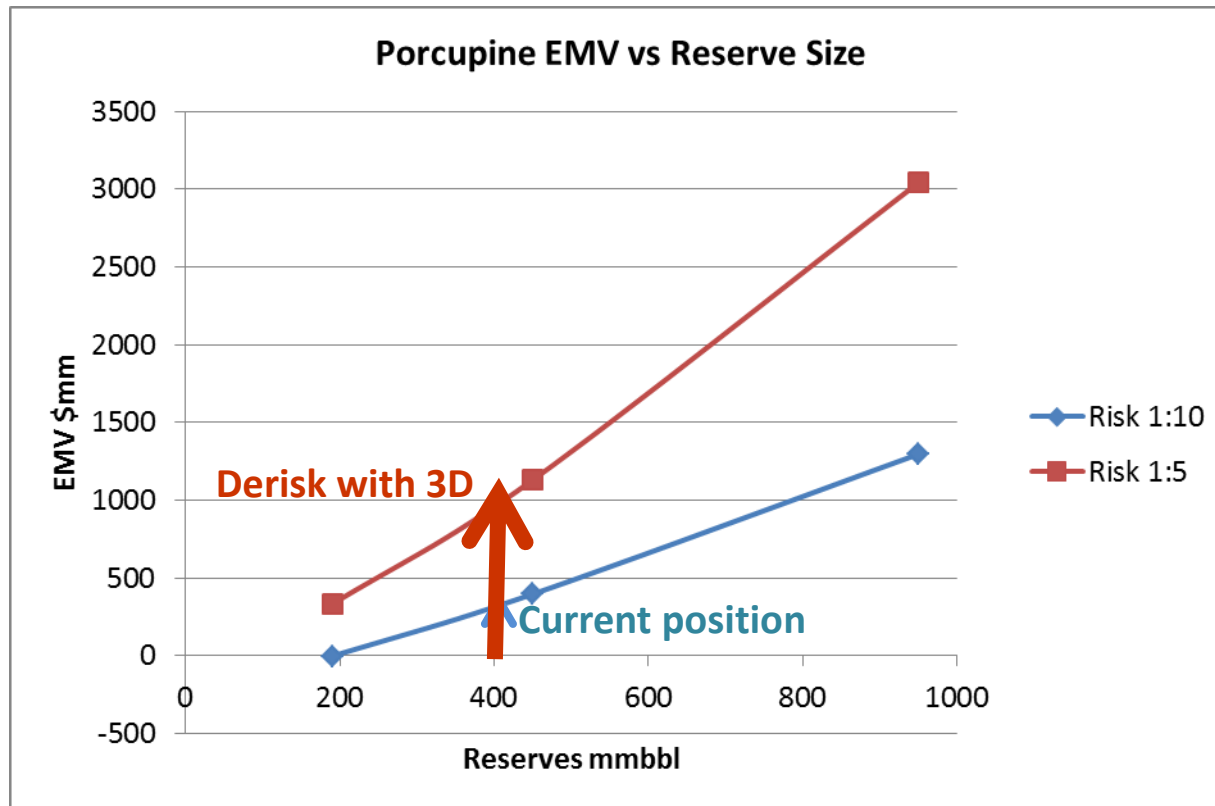
*Note that for Mullen and Kiernan Barremian prospects the most likely hydrocarbon is oil.

Gas Case

Licence	Lead	Reservoir	Water	Reservoir	Resources			
			Depth	Depth	P90	P50	P10	Mean
			m	mbml	Bcf	Bcf	Bcf	Bcf
Western	Mullen	Aptian	1000	2850	275	1280	4151	1970
Eastern	Kiernan	Valanginian A	2000	4400	1500	4700	11500	5800
Eastern	Kiernan	Valanginian B	2000	4700	200	900	4700	1900
Eastern	Kiernan	Barremian	1800	3700	600	1800	4600	2300
TOTAL								11970

For the Kiernan Valanginian Fan A&B the most likely hydrocarbon is gas

Prospect Reserve Size Cut-off for Porcupine Basin



Basin immaturity (and risks) suggests minimum drillable prospect size is around 200 mmbbl despite lenient fiscal regime

De-risking

- Objective – mature prospect to drillable status
- Further work:
 - Undertake more reprocessing of existing 2D to support geophysical studies
 - Ongoing rock physics and AVO studies on 2D data
 - Acquire state of the art 3D seismic dataset
 - Aim to de-risk prospect through conformance, flat events and AVO.
- Other sources
 - Technical success at Dunquin may help de-risk source rock elements
 - Drilling of Cretaceous stratigraphic traps elsewhere in the Atlantic region may contribute new insights

Summary

- South Porcupine Basin, offshore West Ireland - underexplored frontier basin
- Europa has 100% equity in two licences: LO 11/7 and LO 11/8
- Two prospects with potential to host large volumes of hydrocarbons in Cretaceous stratigraphic traps
 - 11/7 Prospect Mullen 482 mmbo mean unrisked indicative resources
 - 11/8 Prospect Kiernan 1.6 billion bbls aggregate mean unrisked indicative resources
- Seeking a joint venture partner or partners to share seismic acquisition and (if justified) drilling
- Data room opened on 28 January 2013
- Possibility of joining a 3D seismic programme in 2013 and getting a rig slot in 2015
- Priority will be given to joint venture partners who have the ambition to accelerate exploration



For further information contact:

**Europa Oil & Gas (Holdings) PLC
6 Porter Street
London
W1U 6DD
UK**

Telephone +44 20 7224 3770

mail@europaoil.com
www.europaoil.com

**Visit us at booth 732 in
the International Pavilion**

