

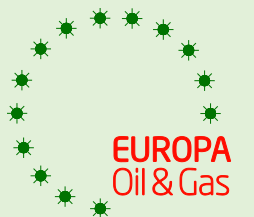
Atlantic Ireland: poised for the breakthrough?

Neil Parkinson & Rowland Thomas

Europa Oil & Gas

www.europaoil.com

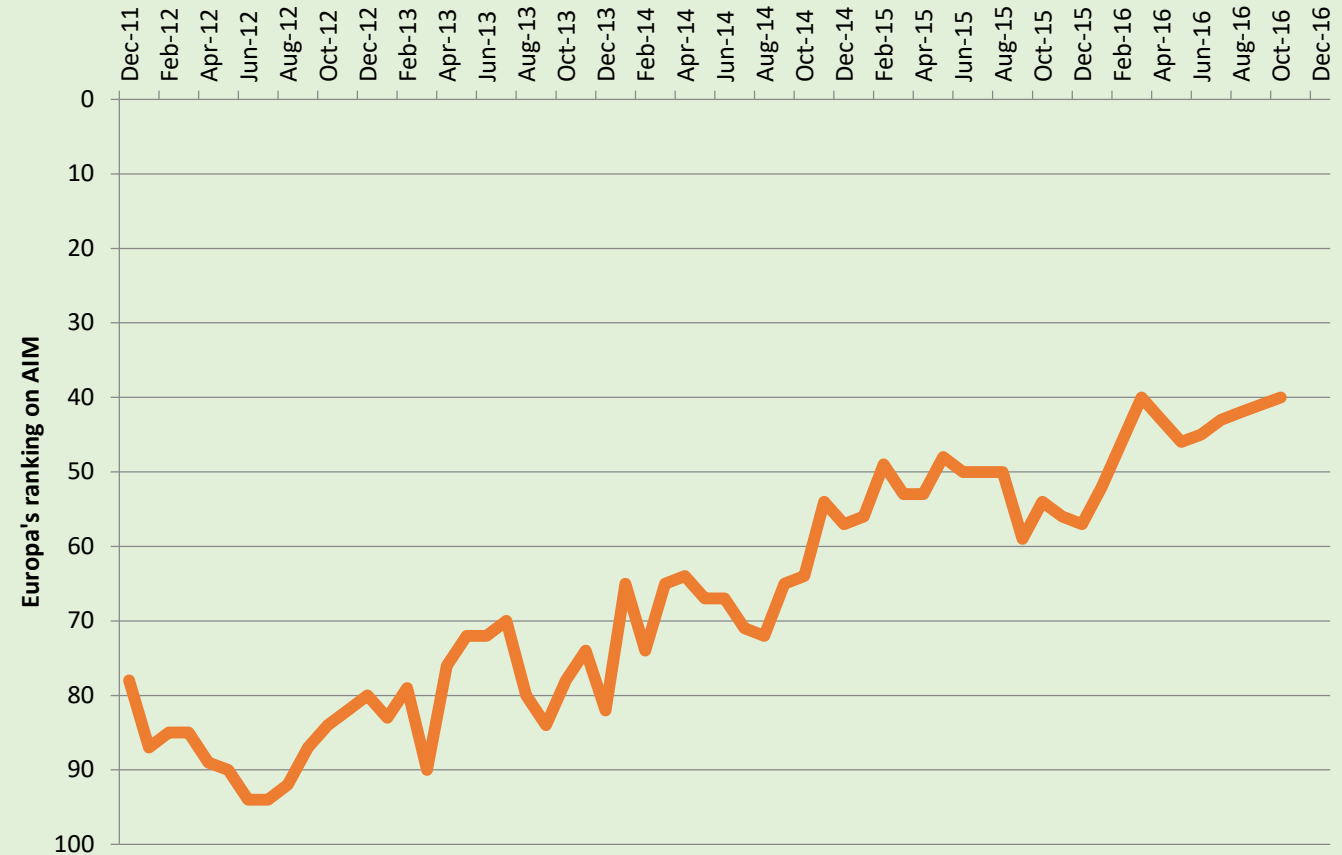
1. Introduction to Europa & (Atlantic) Ireland.
2. South v. North Porcupine Basin.
3. South Porcupine Plays – pre-rift fault blocks, syn-rift Flemish Pass analogues, post-rift fans.
4. Greater Corrib infrastructure-led exploration.
5. Rockall Margin – Padraig Basin.
6. Summary.



Europa Oil & Gas

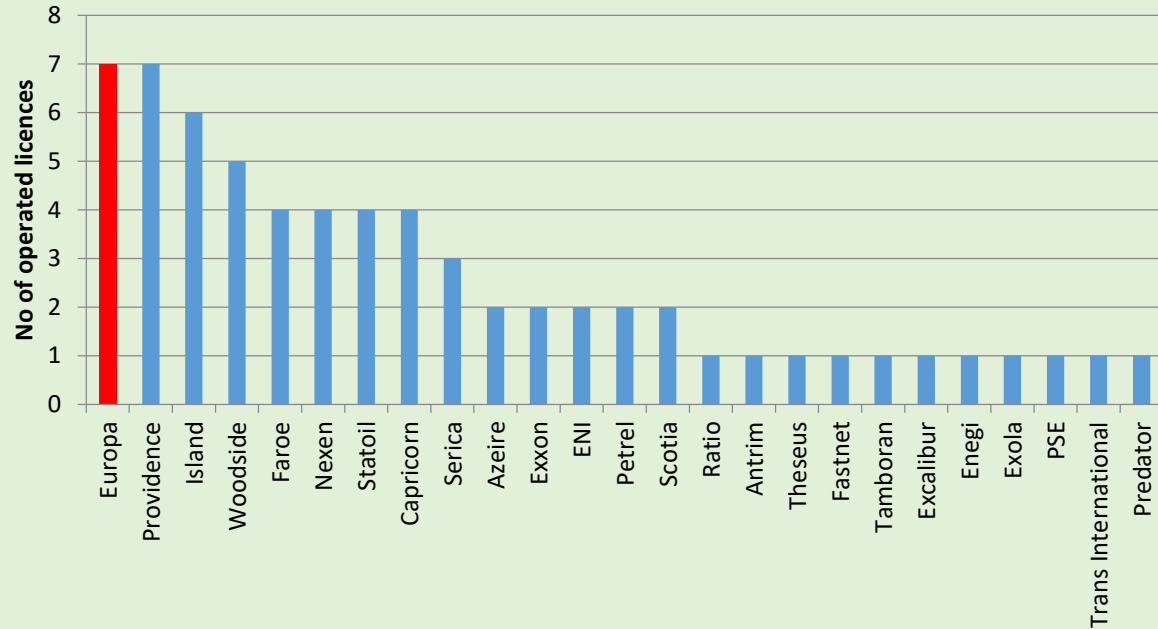
- AIM-listed oil & gas exploration and production company.
- Focus on UK & Ireland.
- Net UK onshore production of 120bopd, expected to double in 2017 due to addition of Wressle discovery.
- Market Cap ~£12MM (@5p/share).

AIM Oil & Gas Sector - Europa Ranking by Market Cap

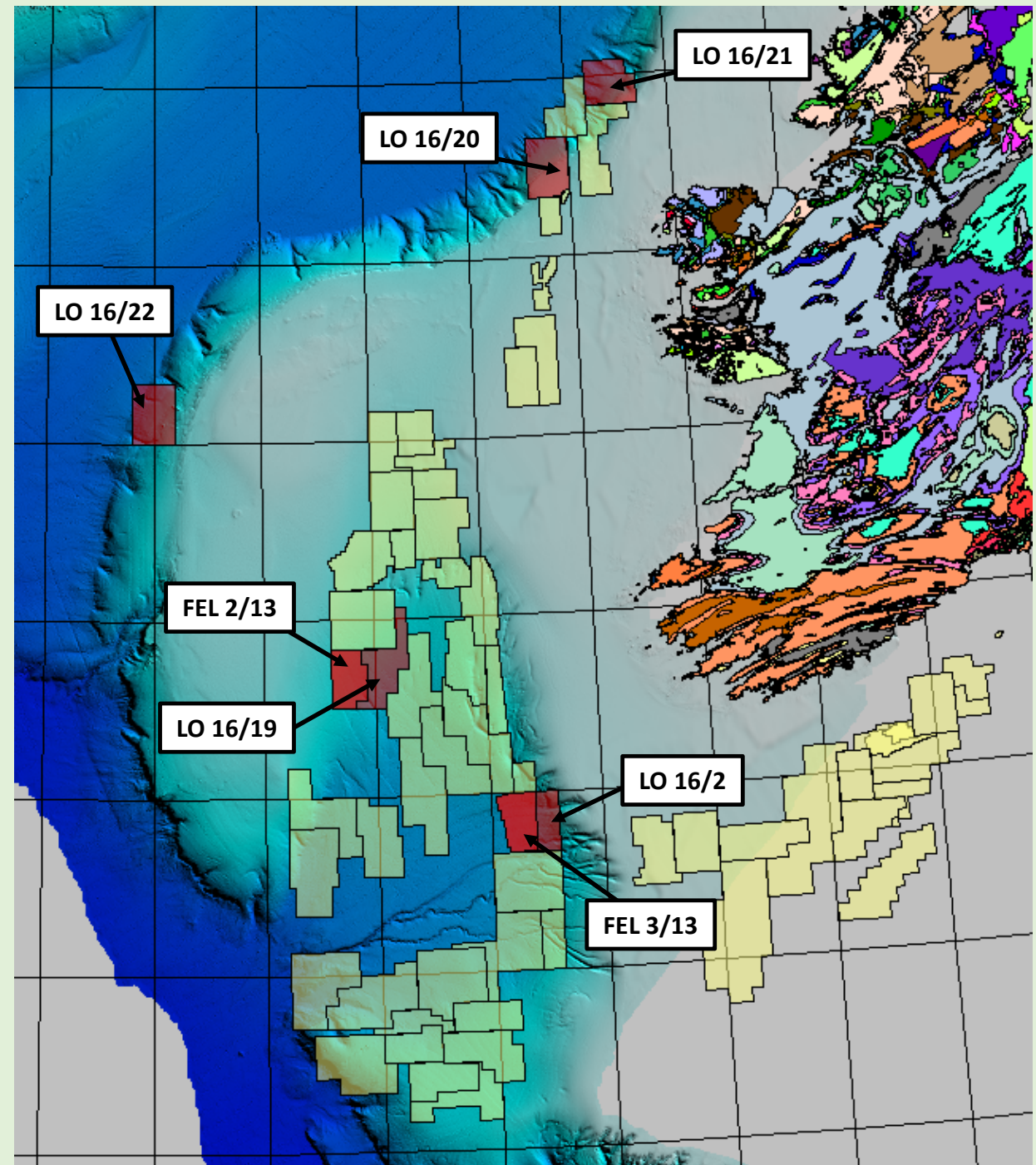


Europa in Ireland

Operated licences in Ireland

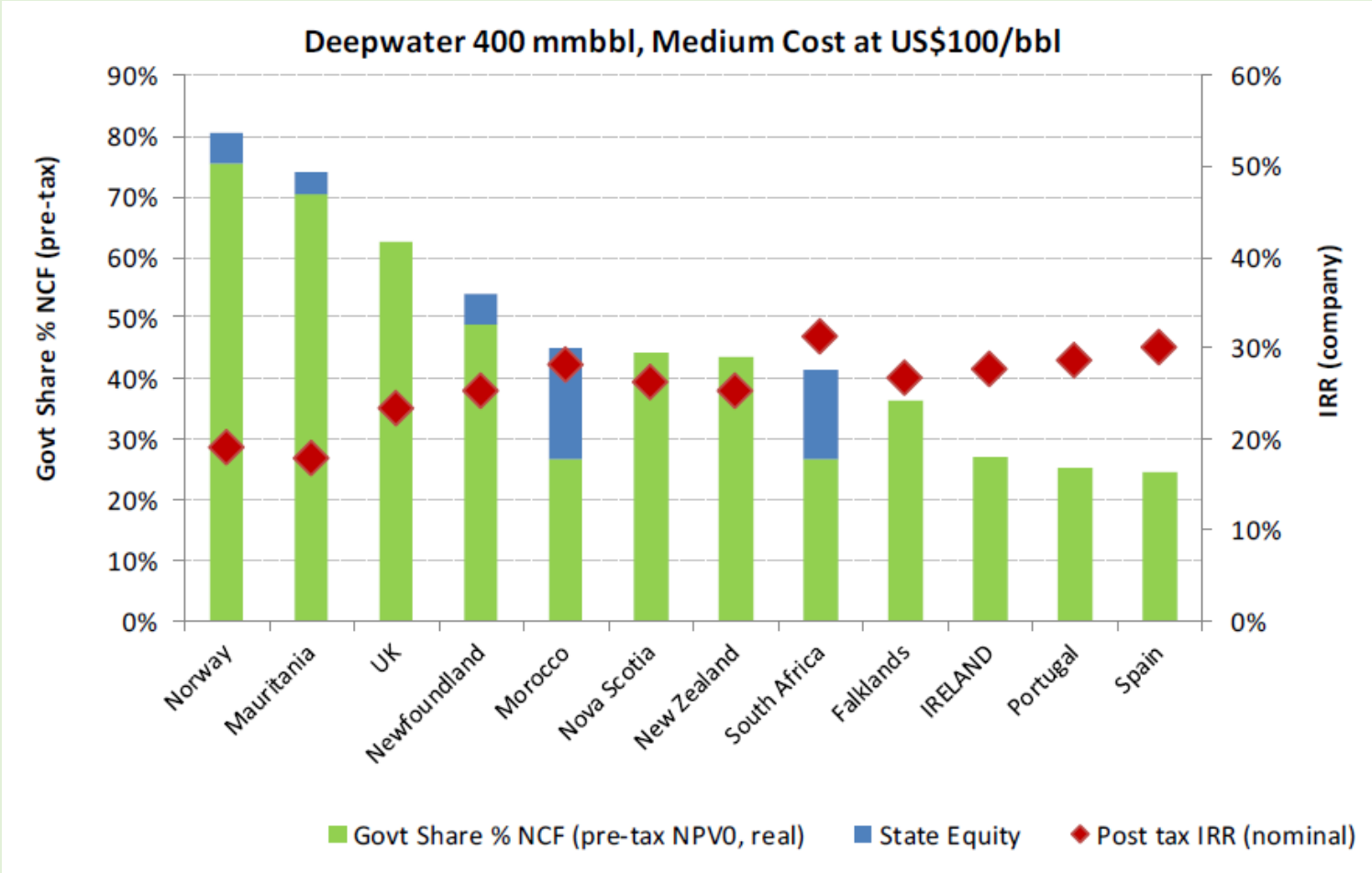


- 2 Frontier Exploration Licences
- 5 Licensing Options
- 5,818 km² area under licence/option
- South Porcupine Basin, Slyne Basin, Padraig Basin
- ~4.2 billion boe and 1.5 TCF gross mean un-risked prospective and indicative resources



Ireland

Material targets in a mature and supportive democracy with one of the most attractive fiscal regimes in the world.



Peer Group Comparison for a nominal development
(Wood MacKenzie, 2014)



Ireland 2015 Licensing Round

**43 applications from 17 companies:
outcome 28 awards to 14 groups/companies**

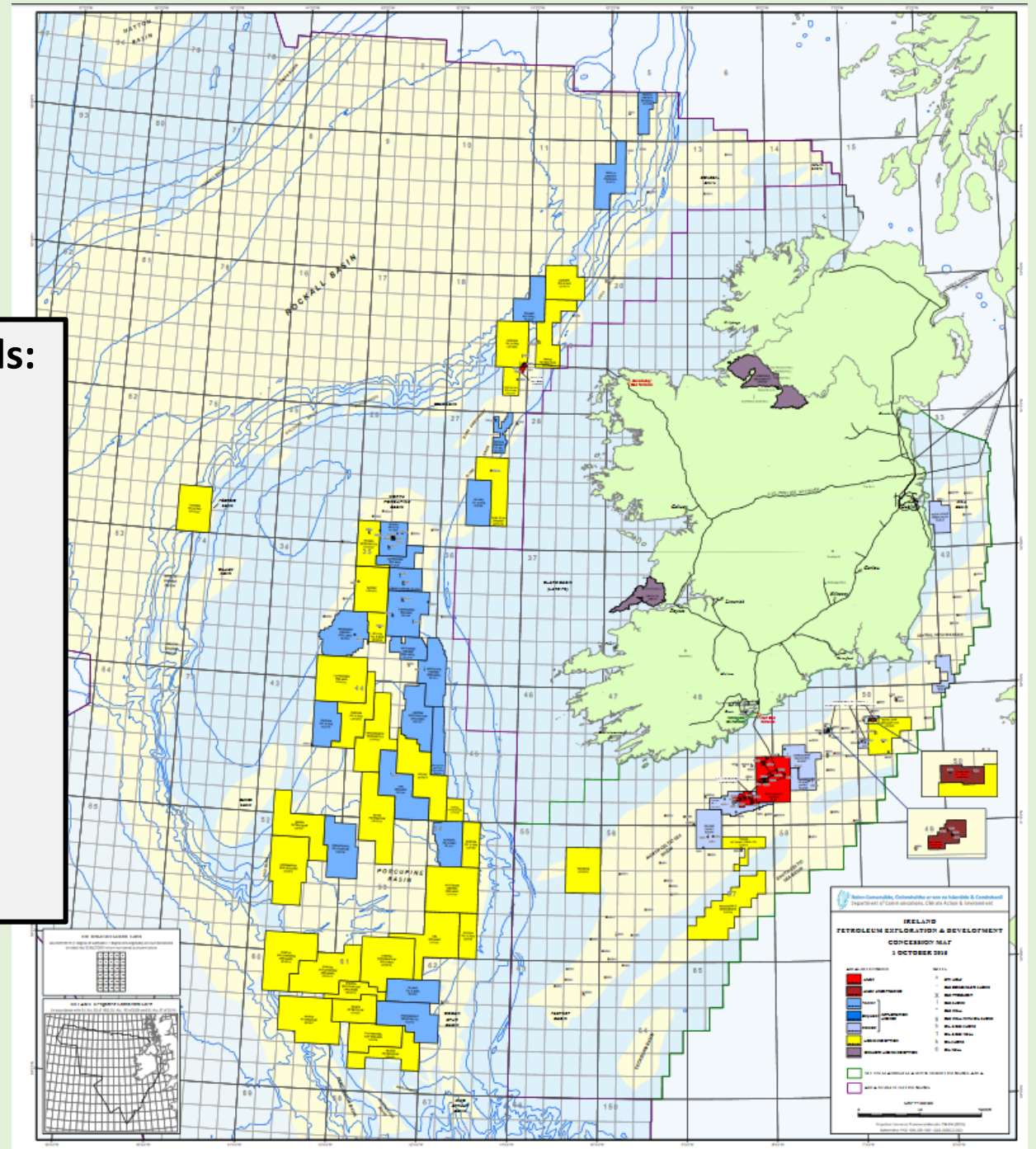
First Phase of awards (South Porcupine): 14 LO's

Eni & BP -1
Europa -1
Exxon & Statoil - 2
Nexen -4
Scotia - 1
Statoil & Exxon -4
Woodside -1

Second Phase of awards: 14 LO's

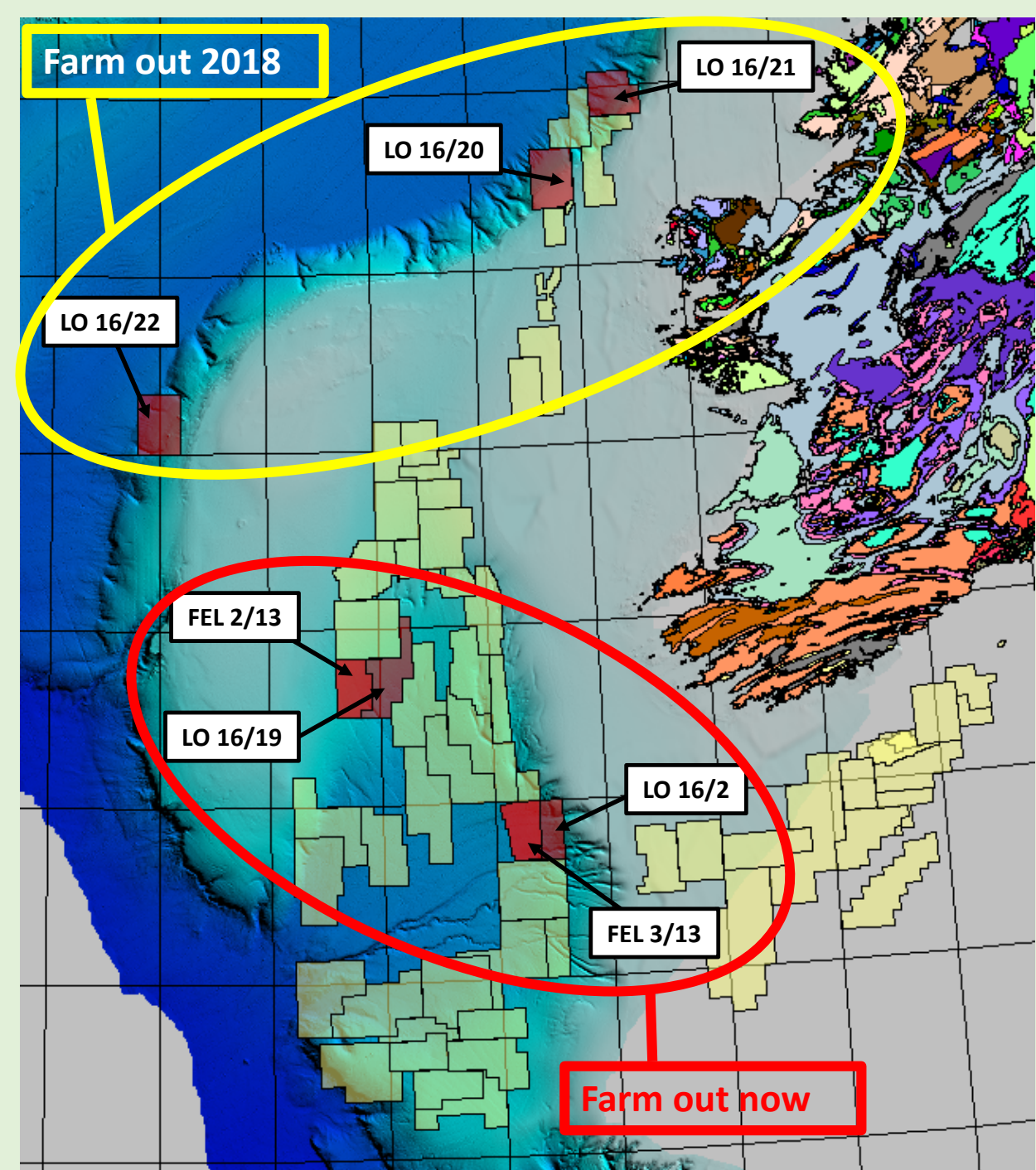
AzEire-2
Capricorn -1
Europa -4
Faroe -1
Petrel -2
Predator & Theseus -1
Providence & Sosina -1
Ratio -1
Scotia - 1

**Europa first entered the basin in 2011.
2015 saw significant (re)entry by the Majors**



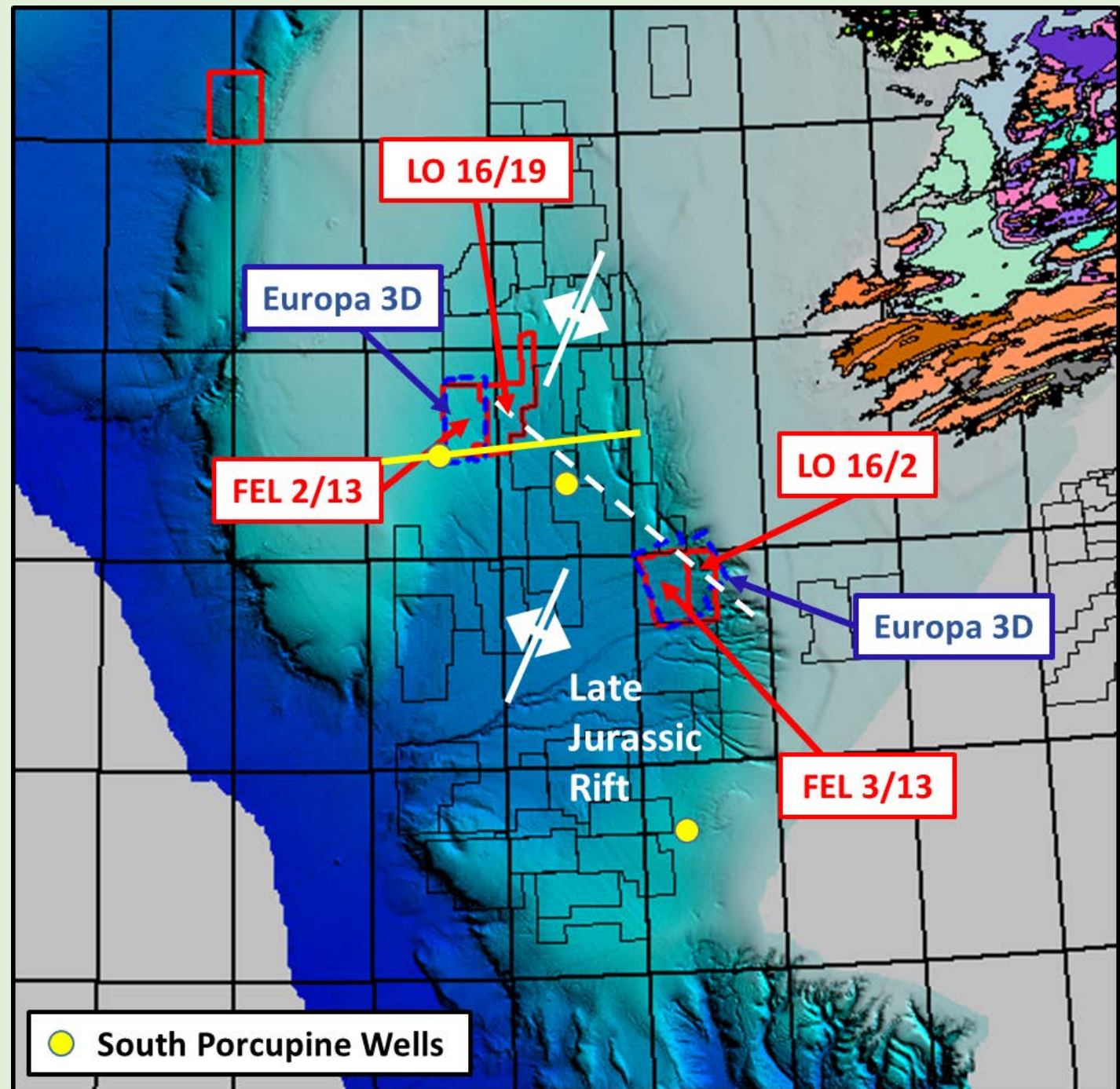
Europa Portfolio

- 2 FEL's and 5 LO's (which are convertible to FEL's), all Europa 100%, each with demonstrable prospectivity and representing a diversity of play types, risk and phasing.
- Ultimately we will be seeking partners in all of these licences.
- We have done much work already in the South Porcupine, and a farmout process is already in progress.
- We have significant technical work to do on the other licence option areas, much of which we expect to fund from our own resources. However, we would welcome commercial discussions at any stage.
- We believe there will be a renewed phase of drilling in Atlantic Ireland. Our objective is to create half a dozen drillable prospects with which to respond to success, or to trail-blaze to success



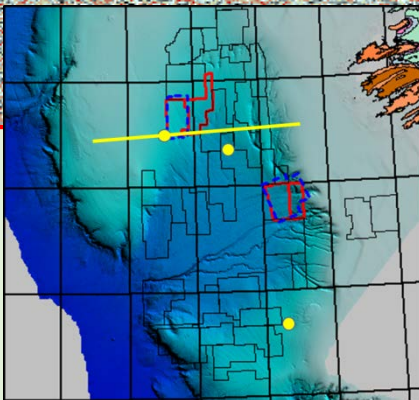
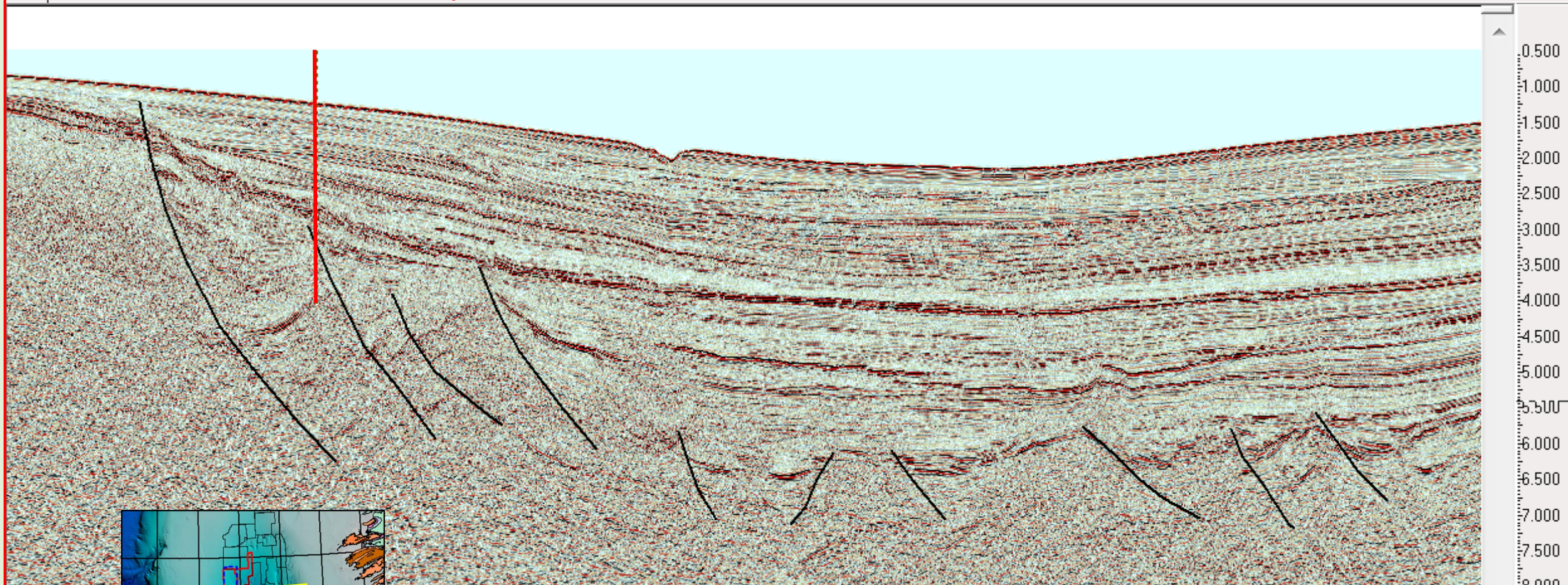
South v. North Porcupine

- Europa's acreage is in the South Porcupine, south of the "Dunquin Transform"
- Deeper water, high stretching, high subsidence, few wells – quite different from the North.



BP 43/13-1

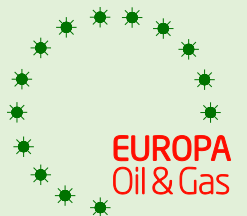
FEL 2/13



PAD14-051 Long Offset

Line length ~ 100km

Vert. Ex. ~ x5

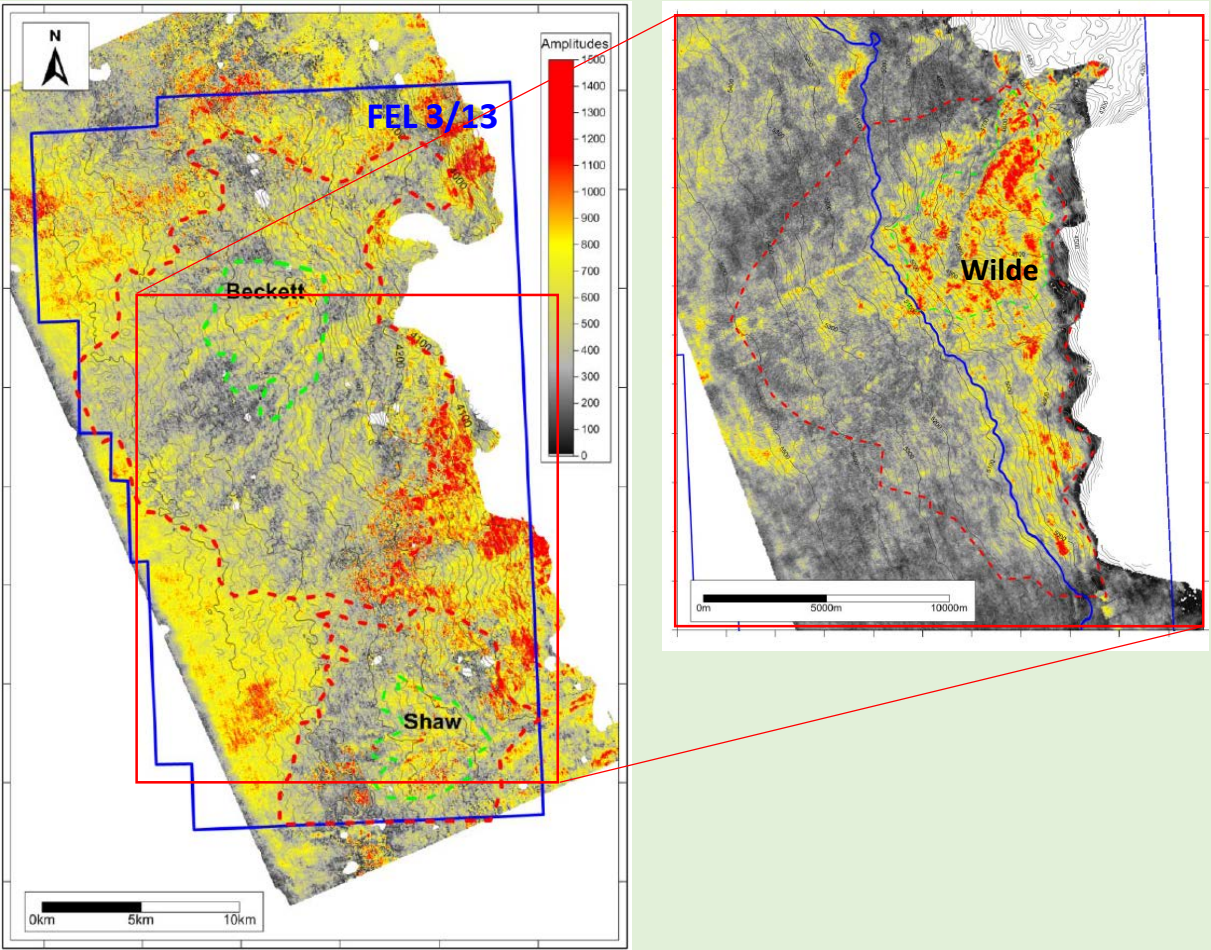
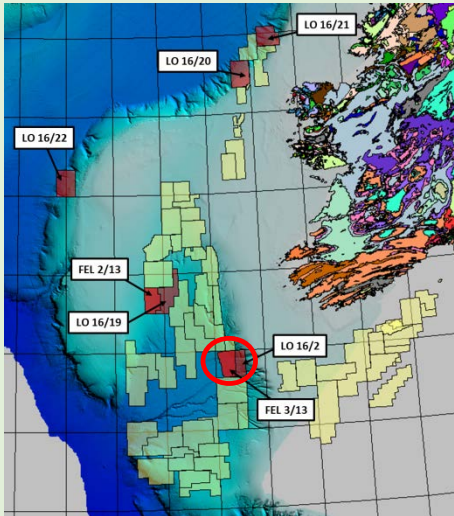


FEL 3/13 Post Rift: Wilde, Beckett and Shaw Lower Cretaceous Fans

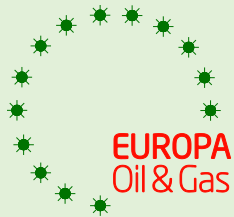
FEL 3/13 Prospect	Gross Un-risked Prospective Resources (mmboe*)				Geological Chance of Success
	Low	Best	High	Mean	
Wilde	61	239	952	428	19%
Beckett	109	424	1,661	749	15%
Shaw	57	198	681	315	13%
Deterministic Total	227	861	3,294	1,492	

*million barrels of oil equivalent, Prospective Resources are recoverable. The hydrocarbon system is considered an oil play and mmboe is used to take account of associated gas. However, due to the significant uncertainties in the available geological information, there is a possibility of gas charge.

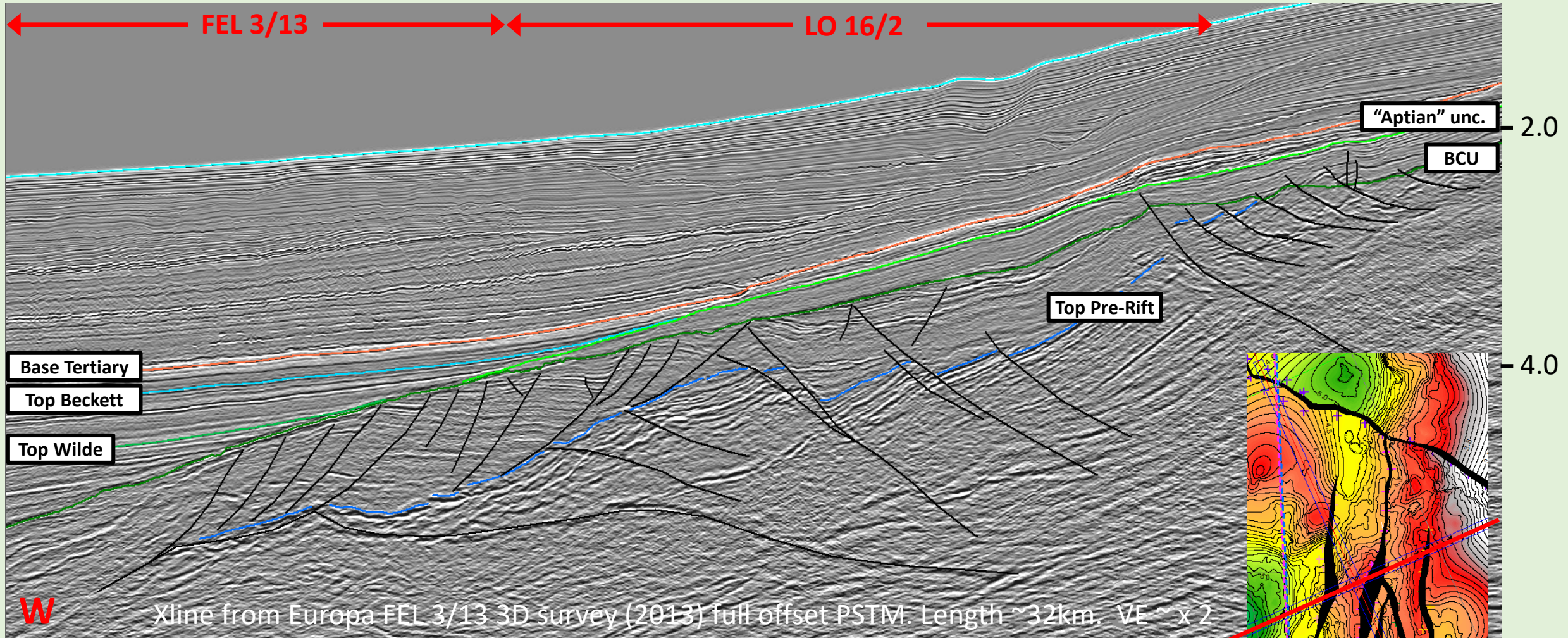
ERCE Audited Values
NPV10 \$7 billion for combined 1.5 billion boe gross mean un-risked prospective resources



Mapped on 3D seismic acquired in 2013.
 Wilde is a stacked fan event, Beckett and Shaw are 1-2 cycle fans.
 Currently farming out FEL 3/13 to drill.
 Drill-ready. Well to test Wilde and edge of Beckett \$37MM (ex mob/demob)

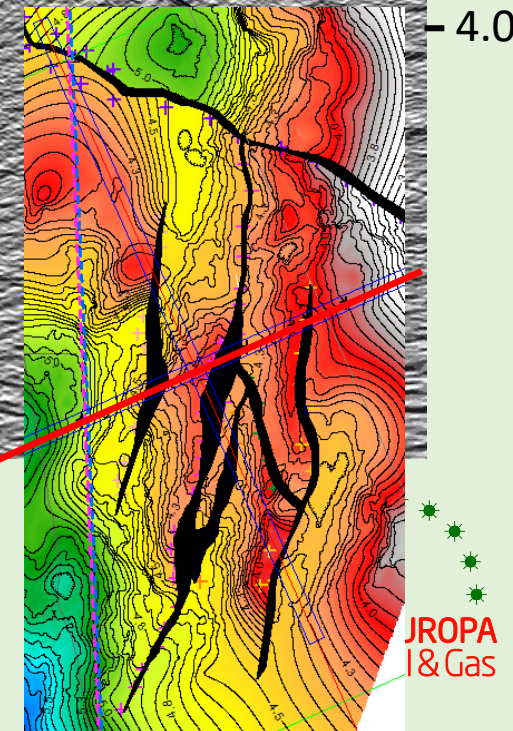


FEL 3/13 & LO 16/2: Pre- & Syn-Rift

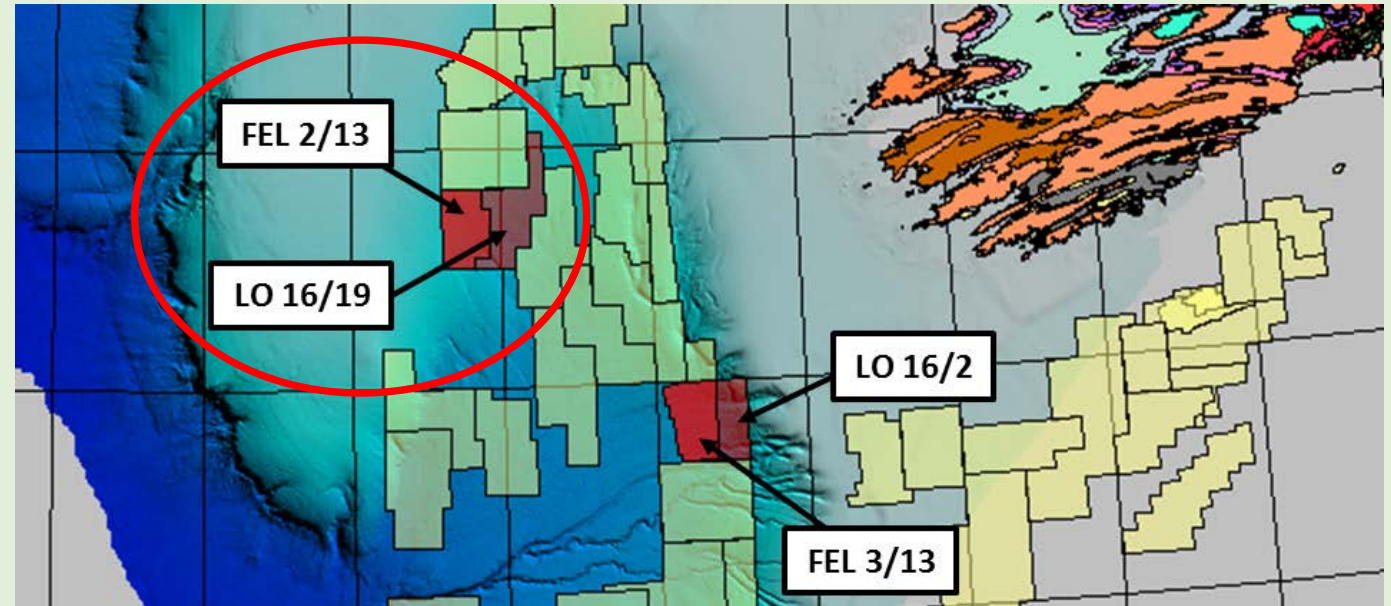
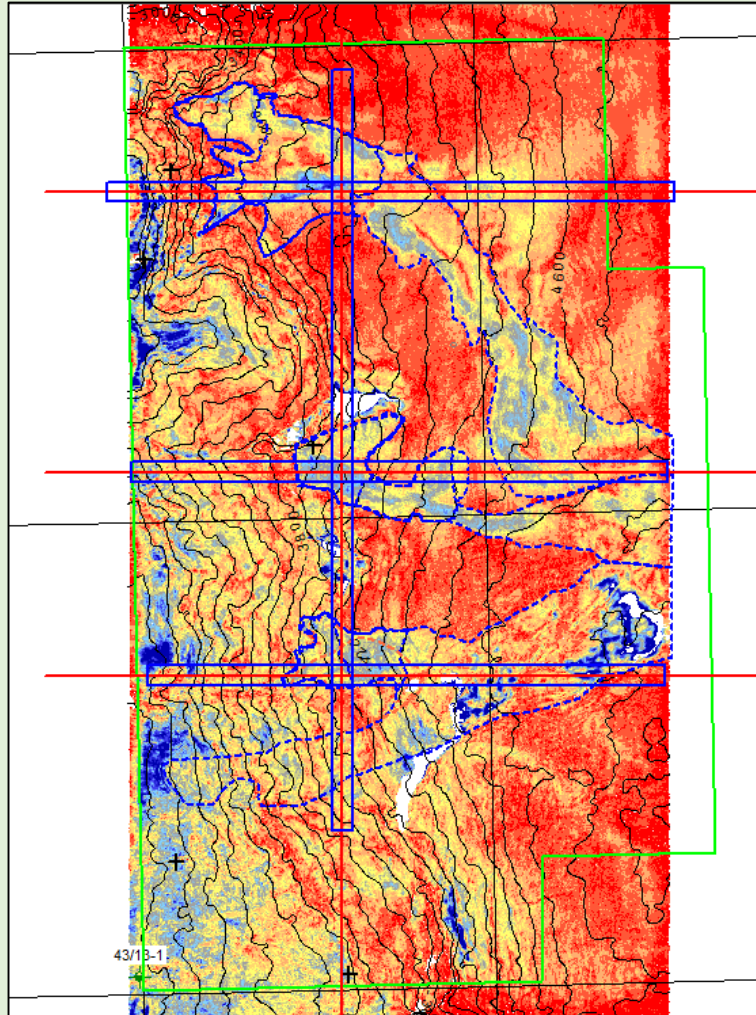


Three fault blocks with combined 895 mmboe gross mean un-risked prospective resources mapped on proprietary 3D
Currently engaged in detailed prospect mapping leading to CPR
Probably requires PSDM to take to drillable prospect status

Top Pre-Rift TWT



FEL 2/13 & LO 16/19 Post Rift



FEL 2/13 contains a convergent system of slope channels in the Lower Cretaceous...

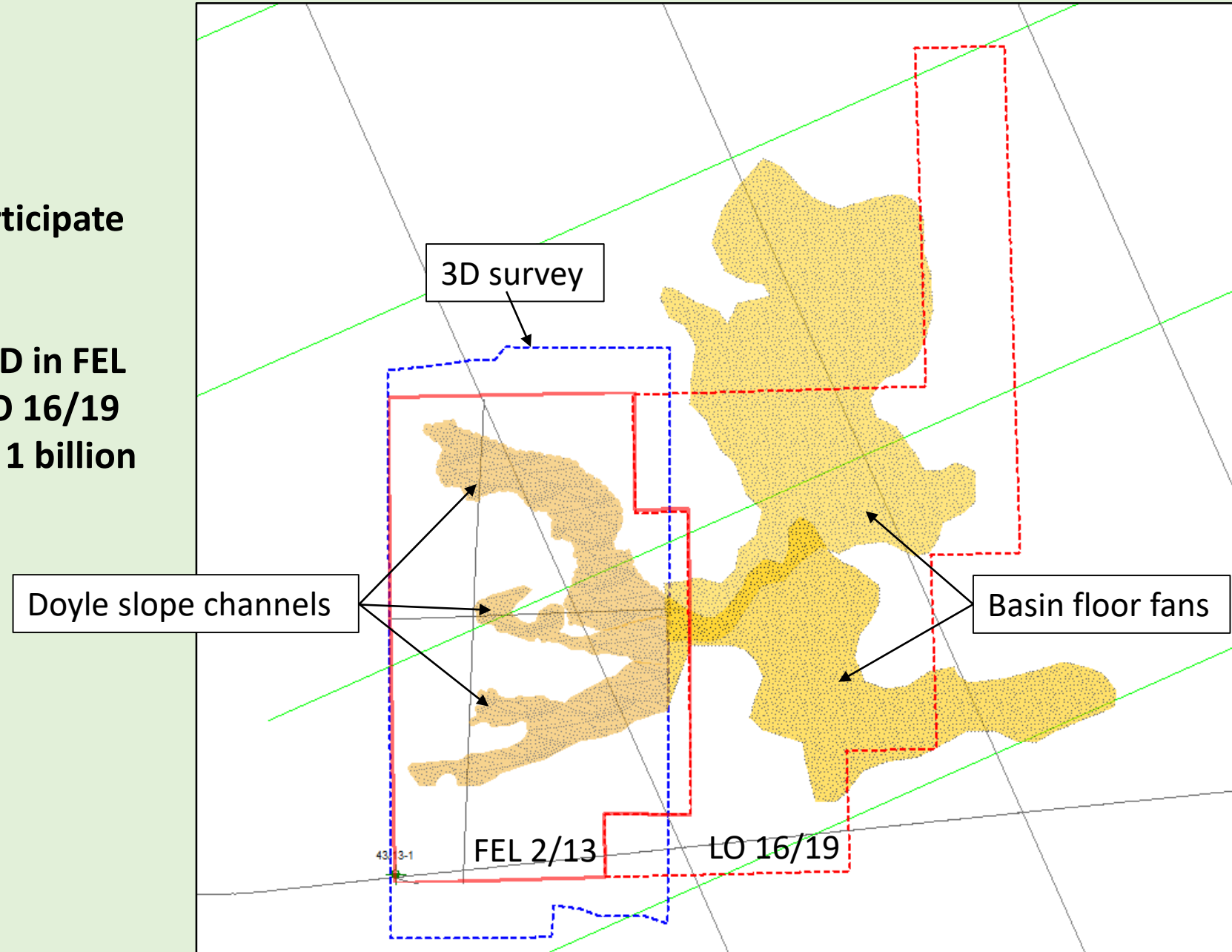
... which feed fans in our LO 16/19.

Pre- and syn-rift prospects yet to map.

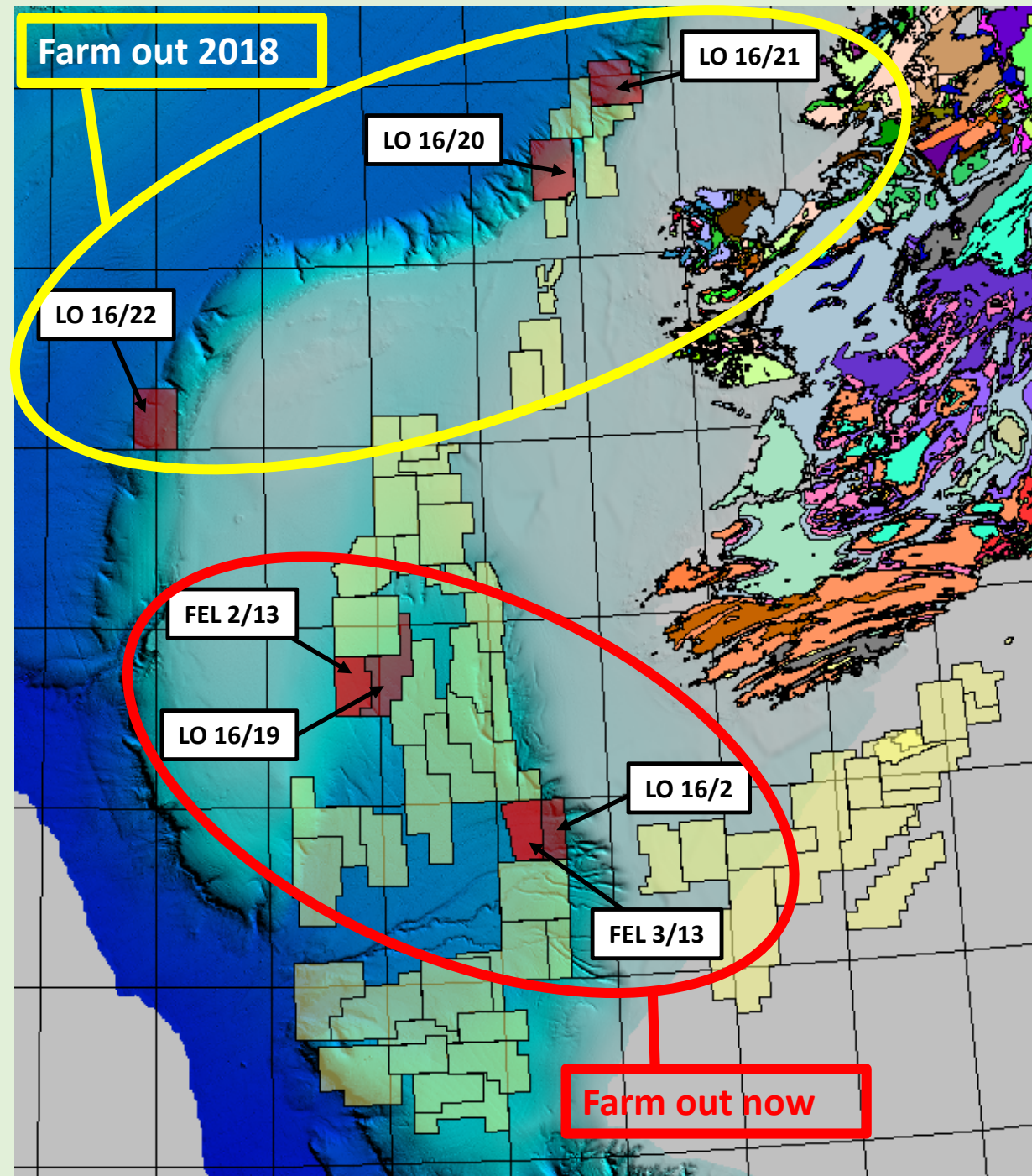
FEL 2/13 & LO 16/19: Pre- & Syn-Rift

Currently seeking farminnee to participate in 2017 3D seismic over LO 16/19.

Submarine channels mapped on 3D in FEL 2/13, feeding submarine fans in LO 16/19
LO 16/19 could have 300 million – 1 billion boe



Europa Portfolio



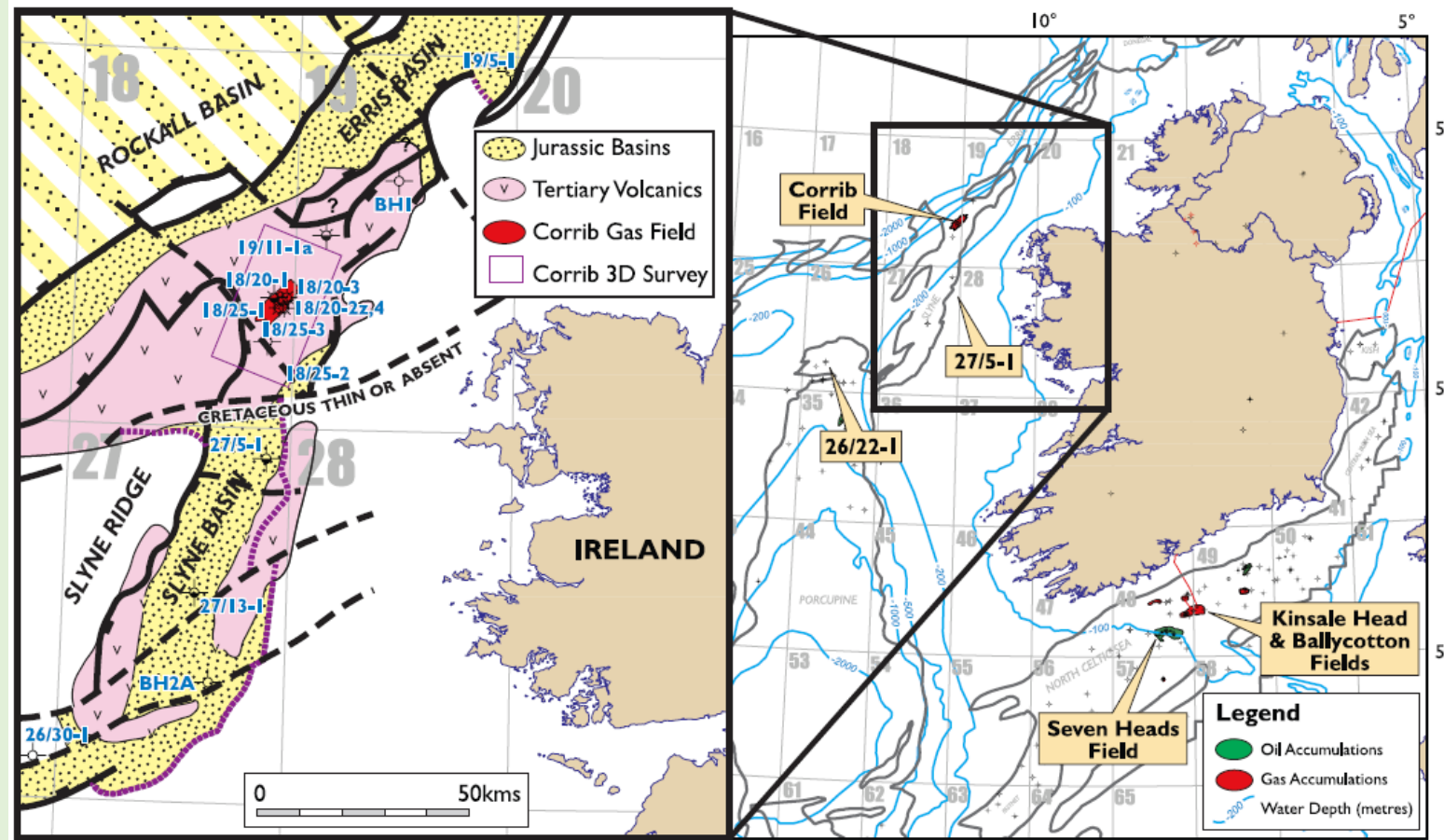
“Greater Corrib”

Corrib Gas Field on stream December 2015.

~1TCF reserves in Triassic Sherwood Sandstone.

Currently 6 wells totalling 350mmscfd (>40% Irish demand).

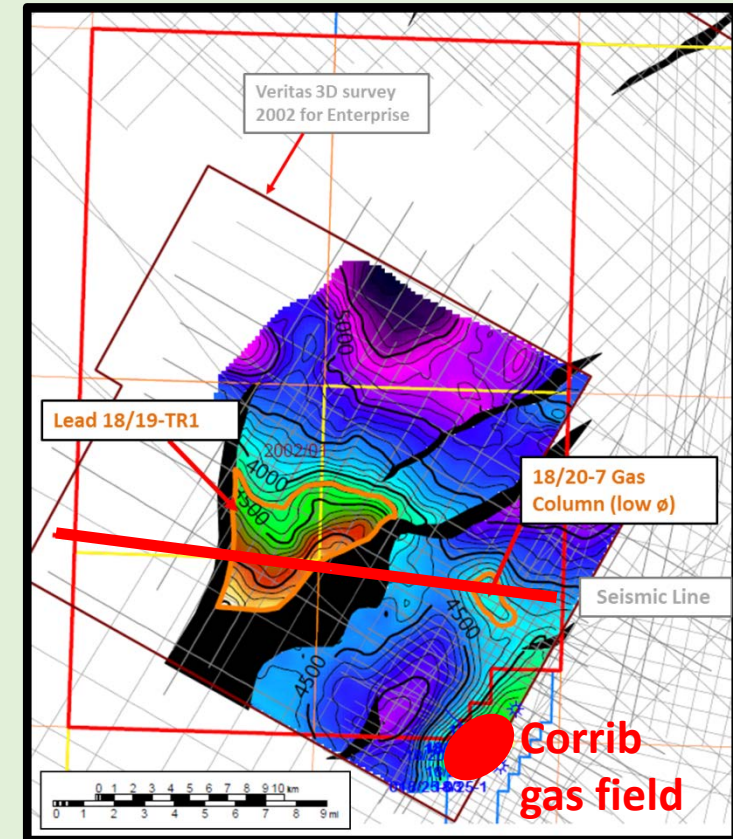
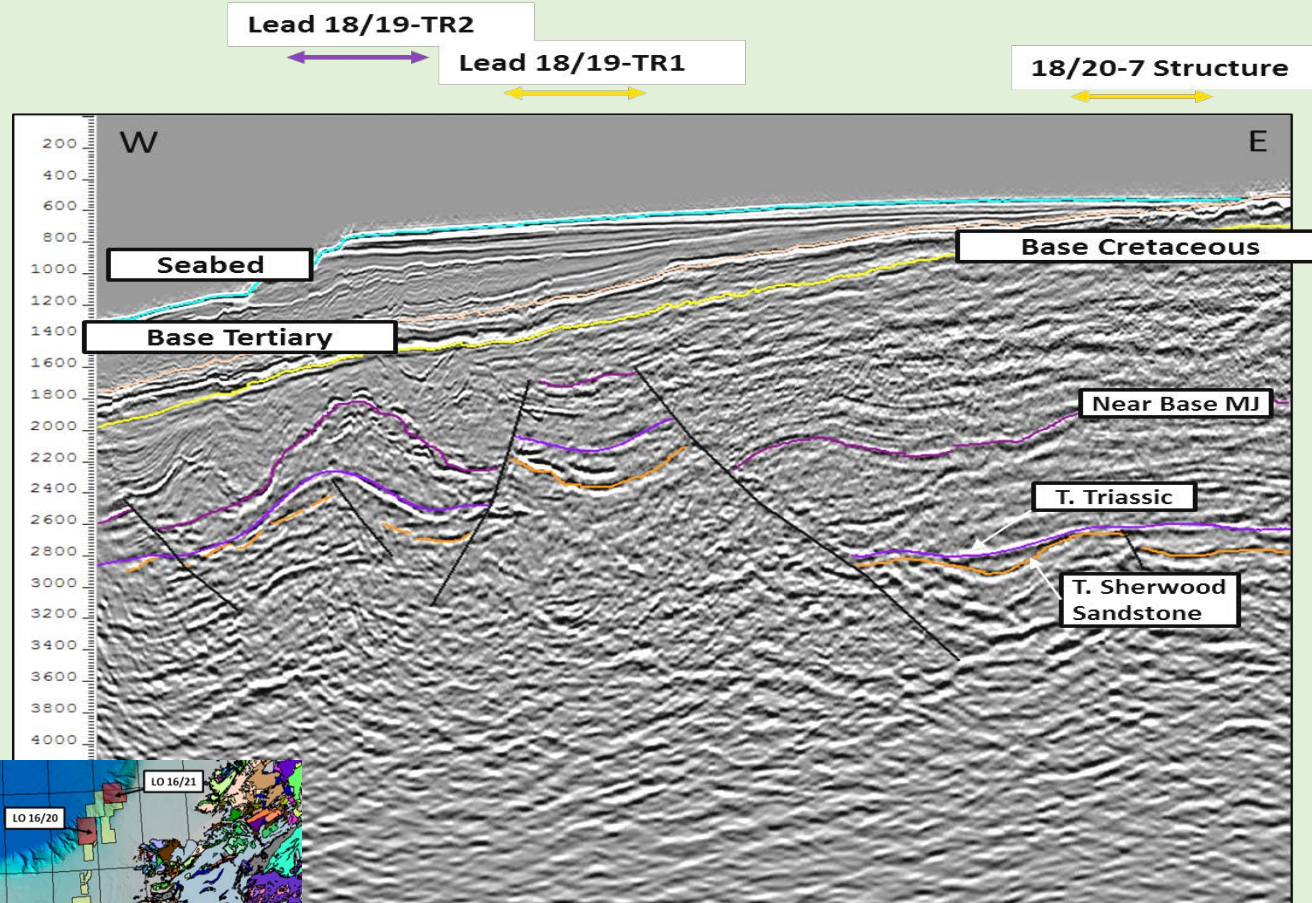
Big drivers to support infrastructure: Corrib off plateau 2-6 years, concerns over Irish energy security, especially post-Brexit.



From Corcoran & Mecklenburgh, 2005



LO 16/20 NW Corrib



Promising Pre-Rift Structure mapped on existing 3D.
 16 km northwest of Corrib field, 500 m water depth.
 1 TCF gas gross mean un-risked prospective resources.
 Planning PSDM reprocessing, then mature to drillable prospect status.
 Farm-out in 2018.

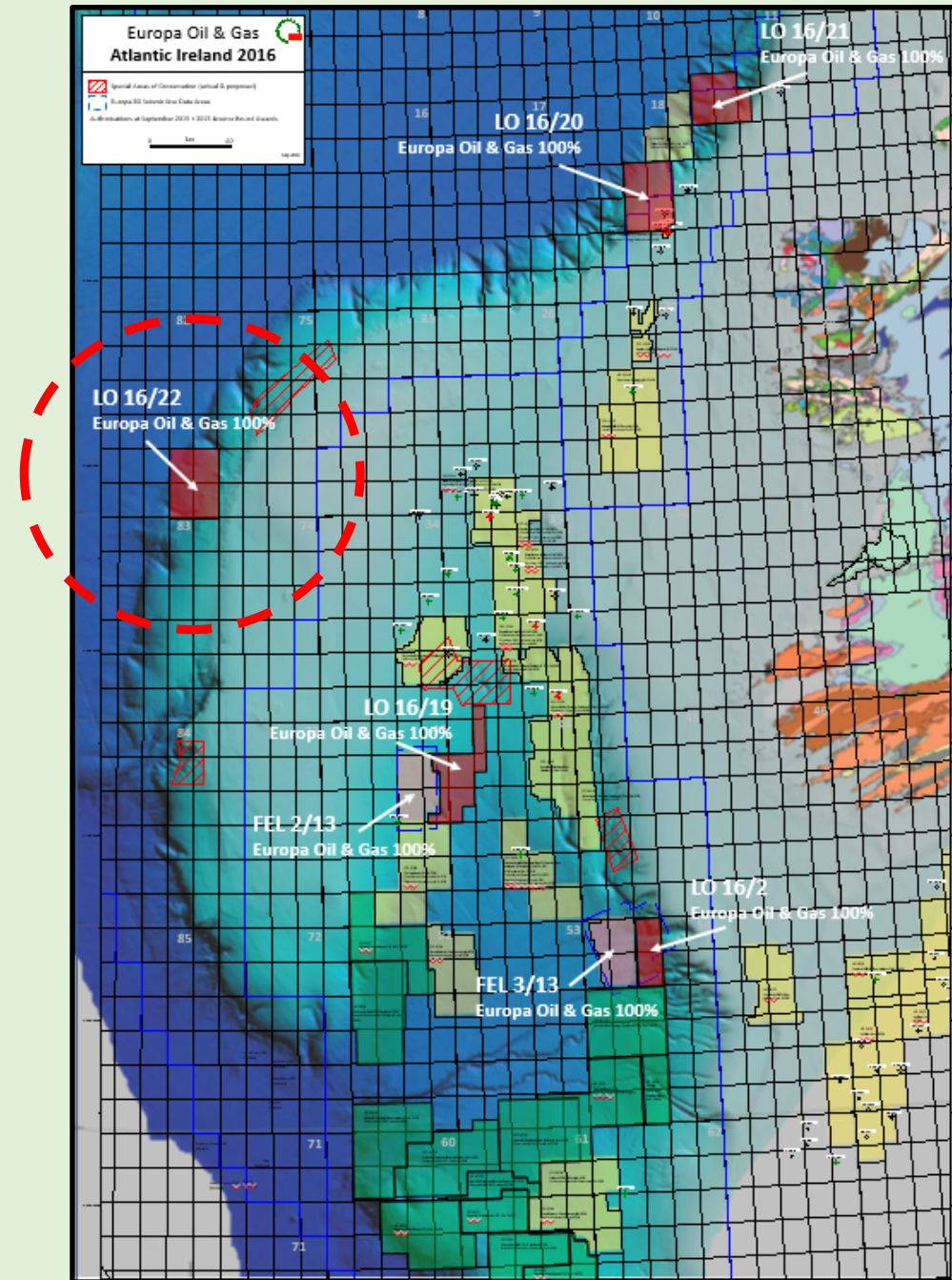
LO 16/22 Padraig Basin

A remnant Jurassic basin on the margins of the Rockall Trough.

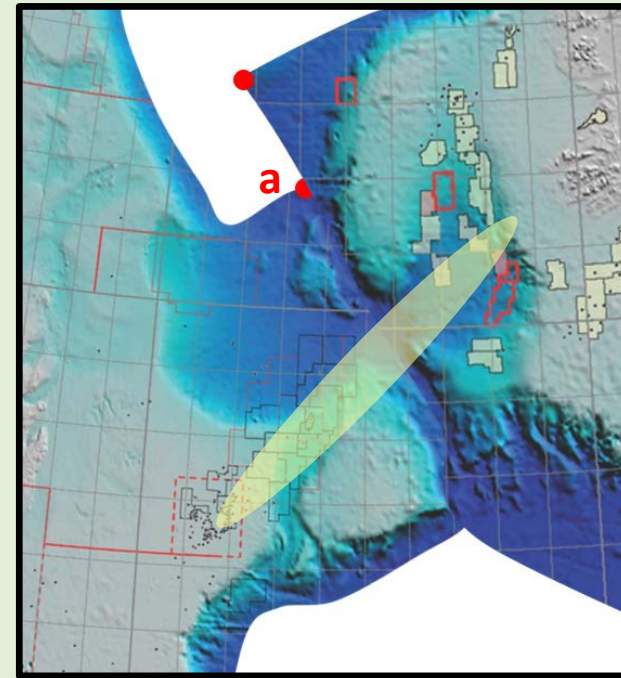
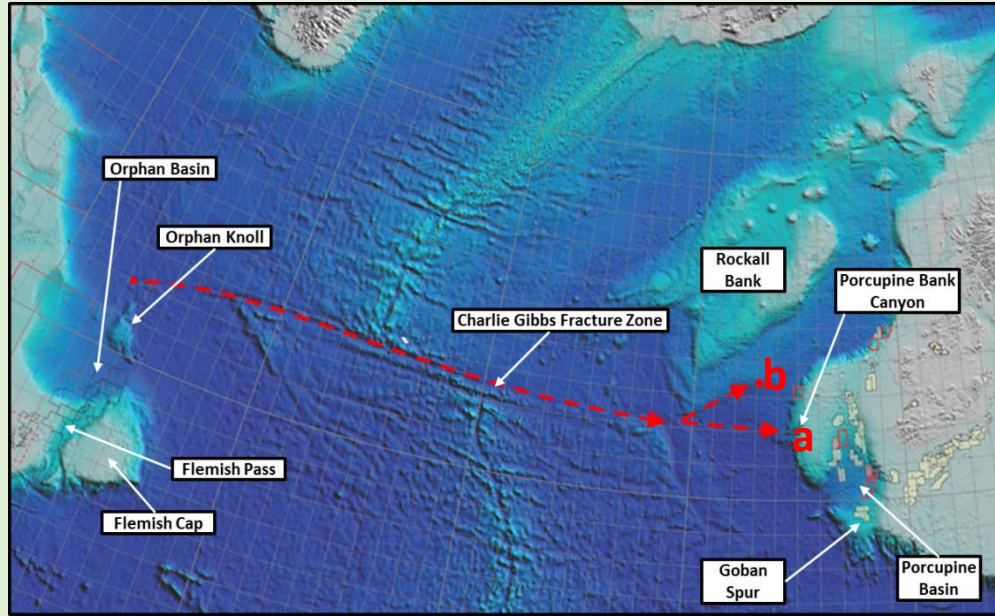
<2000m water, 300km landfall, 150km to Spanish Point – frontier, but realistic.

Good quality 2x4km (locally 1 x 2km) 1998 2D defines significant Mesozoic structures.

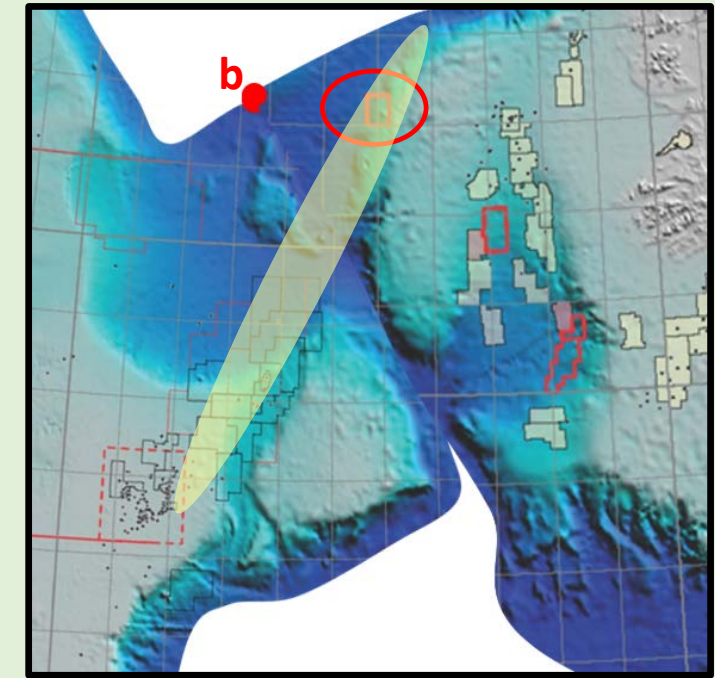
A drop core survey by Phillips (1997) suggests marine source rocks generating light oil/condensate



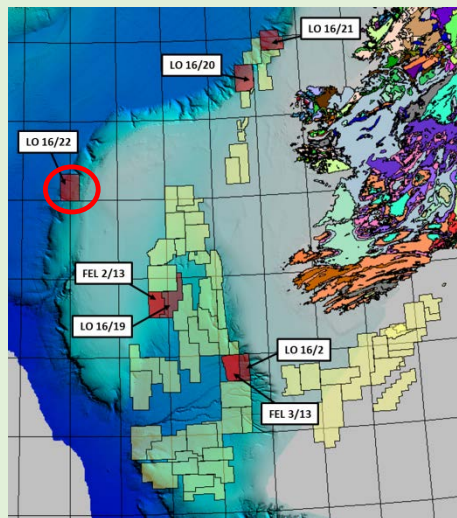
Padraig Basin Exploration Concept

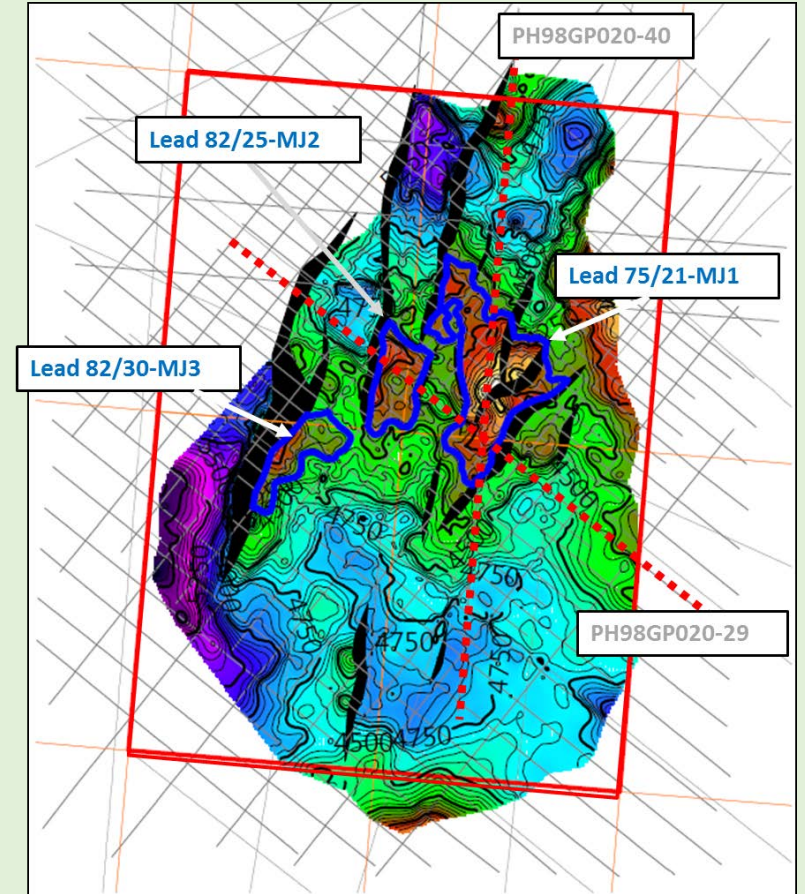
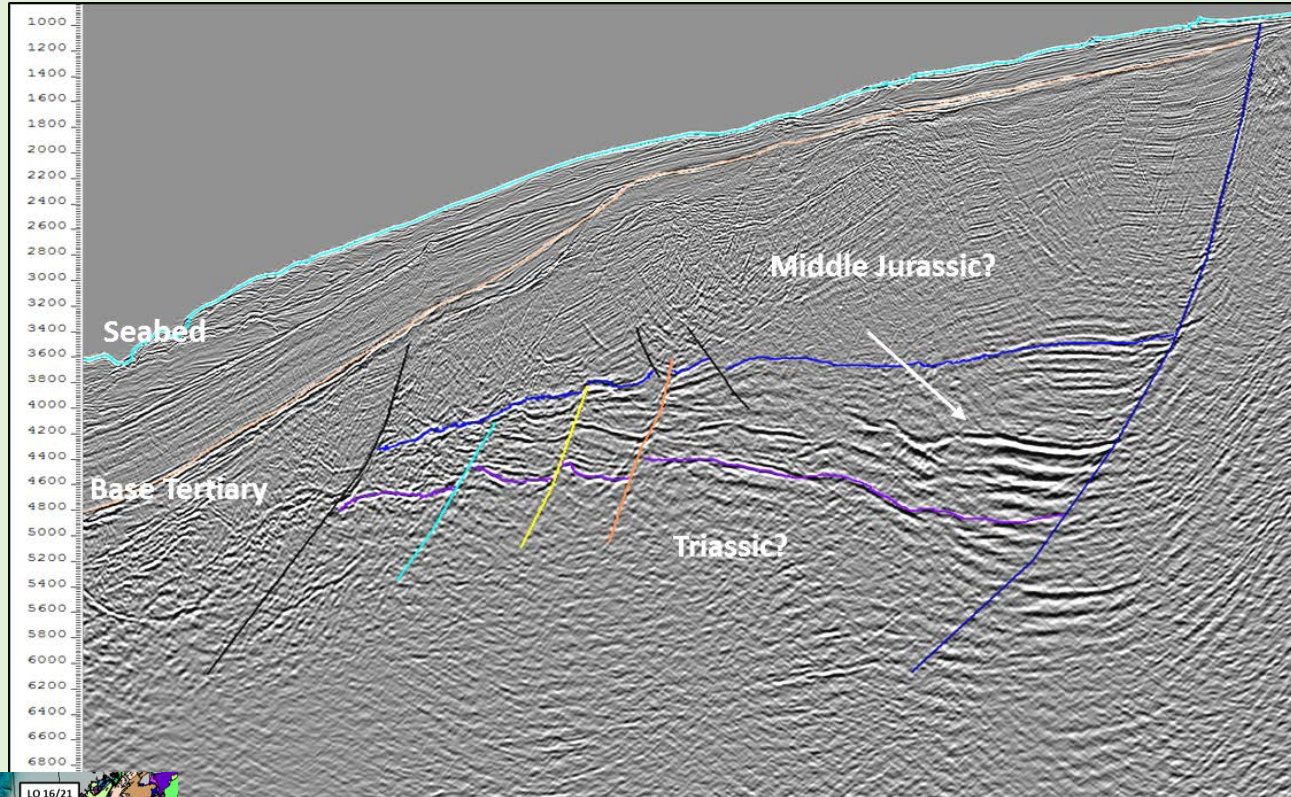


a) Porcupine restores to faces the Orphan Basin



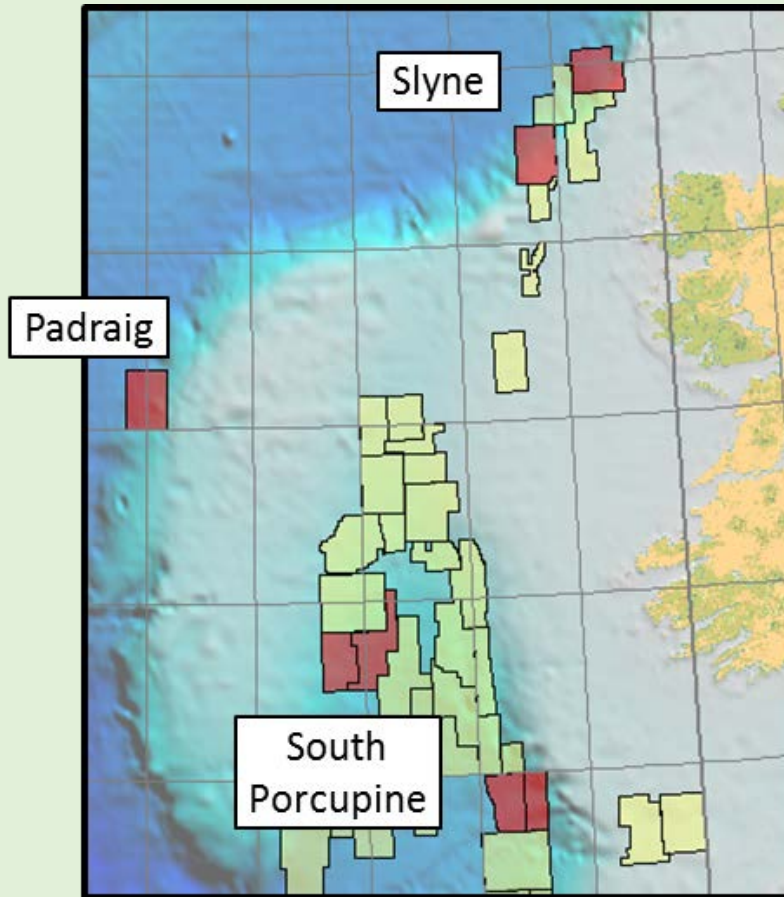
b) Porcupine restores to face Flemish Cap





- Large Mesozoic structural traps. 6 leads, 300-600 mmboe.
- Prospectivity hinges on reflector identification and an improved understanding of petroleum systems.
- Reprocess 2D, mature to drillable prospect status, farm-out in 2018.

Summary



Licence	Area km ²	Basin	Term	Gross mean unrisked prospective and indicative resources	
				Oil million boe	Gas tcf
FEL 2/13	768	South Porcupine	Phase 1 of 15 year	595	
FEL 3/13	782	South Porcupine	Phase 1 of 15 year	1,500	
LO 16/2	523	South Porcupine	2 year	895	
LO 16/19	976	South Porcupine	2 year	700	
LO 16/20	945	Slyne basin	3 year		1.0
LO 16/21	832	Slyne basin	3 year		0.5
LO 16/22	992	Padraig basin	3 year	500	
Total	5,818			4,190	1.5

PLEASE VISIT US AT OUR STAND IN THE INTERNATIONAL PAVILLION FOR FURTHER DISCUSSIONS

mail@europaoil.com

+44 20 7224 3770

www.europaoil.com

